

POCKET DOORFRAMES, SLIDING SYSTEMS

JAP



JAP
DETAIL DECIDES

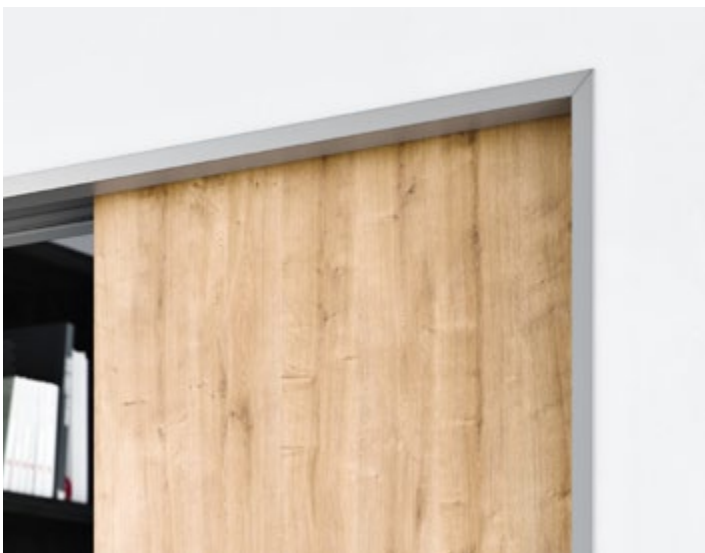
NORMA POCKET DOORFRAME



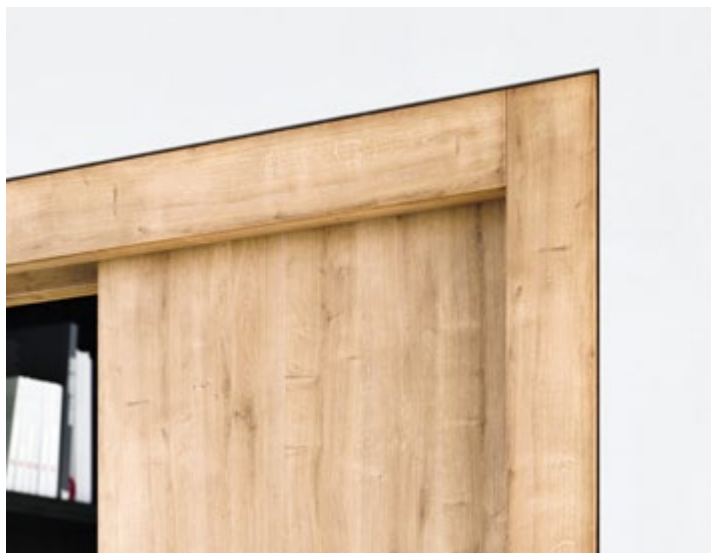
AKTIVE II POCKET DOORFRAME



EMOTIVE II POCKET DOORFRAME



LATENTE POCKET DOORFRAME



002 POCKET DOORFRAMES

006 NORMA

038 PROFIKIT

052 AKTIVE II

068 EMOTIVE II

084 LATENTE

102 FITTINGS

108 SLIDING SYSTEMS

112 TRIX

116 PREMIUM

DETAIL DECIDES

JAP FUTURE POCKET DOORFRAMES

We have been producing and delivering quality pocket doorframes for sliding doors since 2000. This construction element enables sliding doors to elegantly slide into a wall. The pocket doorframe provides an easy, trouble-free travelling mechanism for all door types, including all-glass doors.

We have two types of pocket doorframes, lined and unlined, and single-leaf and double-leaf pocket doorframes.

Unlined pocket doorframes are ideal for minimalist interiors, transforming the perception of space, giving clean, defined lines to your home. They are designed to form only the edge of the passage opening, remaining completely concealed beneath the final surface layer of the partition, i.e. behind a painted or wallpapered wall. Unlined AKTIVE II and EMOTIVE II concealed doorframe solutions lend a minimalist appearance even to revolving doors.

Single-leaf pocket doorframes can be used in both new construction and renovations. They are suitable for living rooms, bedrooms, kitchens, pantries, walk-in wardrobes, bathrooms, toilets, offices, etc.

The double-leaf pocket doorframe for two door leaves is particularly suitable where a wide passage is needed. Excellent between the kitchen and living room. When necessary, the door closes easily to create two separate rooms. If you need to enlarge the space, the door disappears into the wall and there is no obstruction.

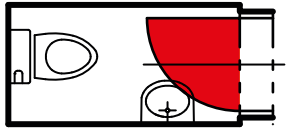


It's beautiful when the moon glides in front of the sun. This precise, graceful movement was the inspiration for our doorframes and sliding systems.

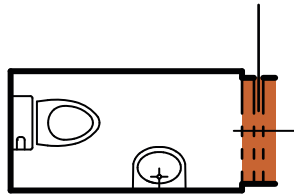


The modern method for partitioning individual areas with a JAP pocket doorframe is a very elegant, silent, and most importantly, barrier-free solution for any interior space. Saving space is the most obvious advantage to using a door that slides into a pocket doorframe. When open, the door leaf creates no obstruction, unlike standard revolving types of doors. In smaller rooms, they enable you to use the space along the wall directly adjacent to the door. A pocket doorframe will provide you with maximum convenience, space savings and a lighter design.

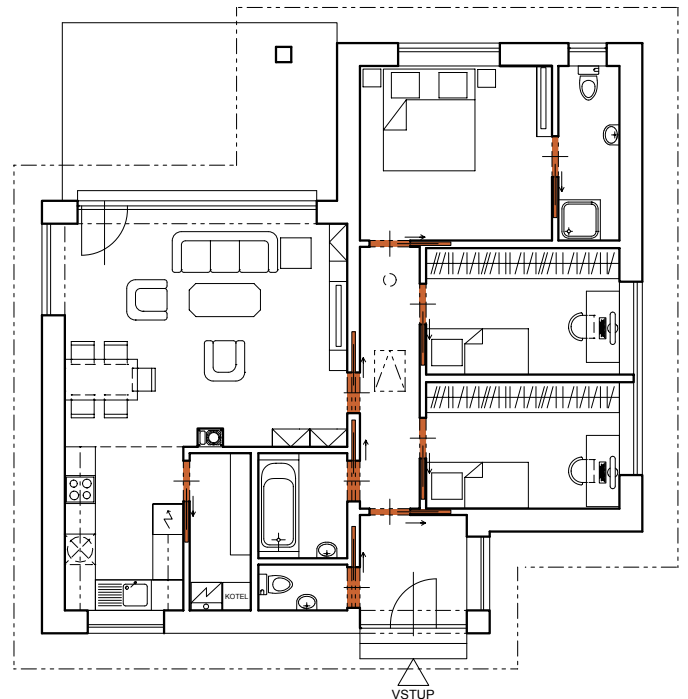
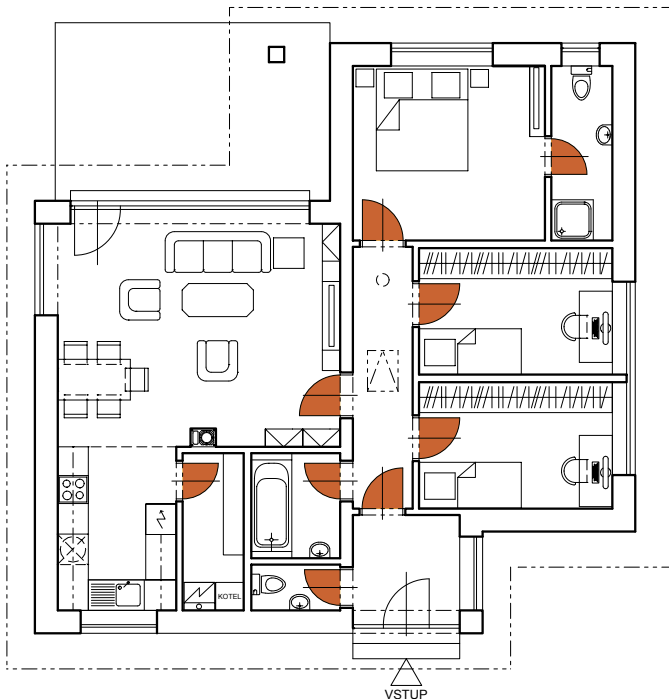
- Increase in usable space
- More practical options for renovating existing spaces
- Greater project design freedom
- Freer, safer movement around the room
- Greater living comfort



- Lack of space
- Limited interior layout options
- Obstruction to free movement



- Increase in usable space
- More practical options for renovating existing spaces
- Greater project design freedom
- Freer, safer movement around the room





Pocket doorframe

NORMA

STANDARD / KOMFORT / UNIBOX / PARALLEL

NORMA STANDARD pocket door frame



NORMA STANDARD



NORMA KOMFORT



NORMA UNIBOX



NORMA PARALLEL



Anchor plates for masonry



Anchors for drywall



Benchmark



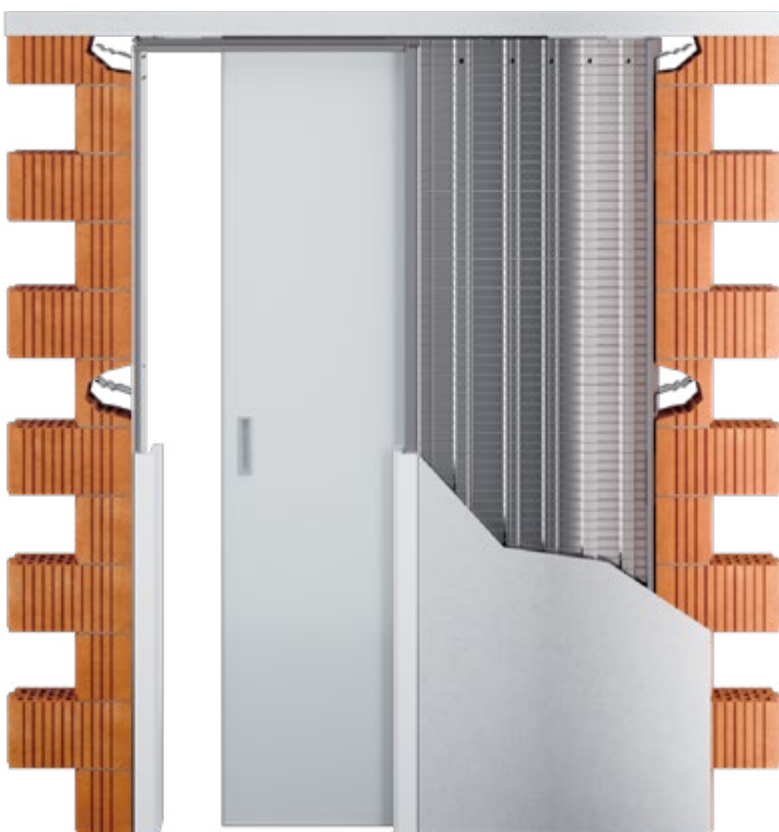
Pocket doorframe NORMA STANDARD

NORMA STANDARD pocket door frame



This model is the most common type of mounting panel pocket doorframe for single-leaf sliding doors. For standard passage heights of 1970 and 2100, a clinched pocket doorframe is supplied. A welded pocket doorframe is provided for other passage heights.

- This model is the most common type of mounting panel pocket doorframe for single-leaf sliding doors.
- A clinched pocket door frame is supplied for standard passage heights of 1970 and 2100
- A welded pocket doorframe is provided for other passage heights.
- Optional non-standard dimensions to passage height of 2700 mm
- Used for drywall or masonry
- For masonry partitions, the hole must be provided with a lintel — the pocket doorframe cannot bear a load.
- For wooden, all-glass, MASTER and IDEA doors
- Compatible with all makes of door
- Maximum weight per door leaf is 120 kg
- High-quality, very quiet travelling mechanism in a special aluminium slat
- Removable upper rail
- Adjustable front and rear stop
- Option to purchase a damping stop for gradual door closing
- A switch can be placed in the frame pocket
- Entire frame made of high-quality galvanized sheet metal
- Guide pin with precise delimitation at the centre of the frame
- 10-year warranty



Dimensions of pocket doorframe

NORMA STANDARD

All dimensions are in millimetres.

Maximum dimensions of door leaf (F) for K 100: 68.

Maximum thickness of door leaf (Fa) for Ka 75: 52.

NORMA STANDARD 1970 mm

Height of net passage after installation of mounting panels (J): 1970.

Total height of the pocket doorframe (H): 2060.

Standard height of the door leaf (L): 1985.

Net passage after mounting panels min. (D × J)	Overall dimensions of pocket doorframe (E × H)	Width of sheet metal pocket (A)	Width of passage after installation of pocket doorframe (B)	Standard dimensions of door leaf (C × L)	Dimensions of rough construction opening in drywall	Recommended dimensions for rough structural hole in masonry systems
600 × 1970	1345 × 2060	665	660	650 × 1985	1345 × 2060	1385 × 2080
700 × 1970	1545 × 2060	765	760	750 × 1985	1545 × 2060	1585 × 2080
800 × 1970	1745 × 2060	865	860	850 × 1985	1745 × 2060	1785 × 2080
900 × 1970	1945 × 2060	965	960	950 × 1985	1945 × 2060	1985 × 2080
1000 × 1970	2145 × 2060	1065	1060	1050 × 1985	2145 × 2060	2185 × 2080
1100 × 1970	2345 × 2060	1165	1160	1150 × 1985	2345 × 2060	2385 × 2080
1200 × 1970	2545 × 2060	1265	1260	1250 × 1985	2545 × 2060	2585 × 2080

NORMA STANDARD 2100 mm

Height of net passage after installation of mounting panels (J): 2100.

Total height of the pocket doorframe (H): 2190.

Standard height of the door leaf (L): 2115.

Net passage after mounting panels min. (D × J)	Overall dimensions of pocket doorframe (E × H)	Width of sheet metal pocket (A)	Width of passage after installation of pocket doorframe (B)	Standard dimensions of door leaf (C × L)	Dimensions of rough construction opening in drywall	Recommended dimensions for rough structural hole in masonry systems
600 × 2100	1345 × 2190	665	660	650 × 2115	1345 × 2190	1385 × 2210
700 × 2100	1545 × 2190	765	760	750 × 2115	1545 × 2190	1585 × 2210
800 × 2100	1745 × 2190	865	860	850 × 2115	1745 × 2190	1785 × 2210
900 × 2100	1945 × 2190	965	960	950 × 2115	1945 × 2190	1985 × 2210
1000 × 2100	2145 × 2190	1065	1060	1050 × 2115	2145 × 2190	2185 × 2210
1100 × 2100	2345 × 2190	1165	1160	1150 × 2115	2345 × 2190	2385 × 2210
1200 × 2100	2545 × 2190	1265	1260	1250 × 2115	2545 × 2190	2585 × 2210

A – width of sheet metal pocket

B – width of passage after installation of pocket doorframe

C – standard width of door leaf

D – width of net passage after installation of mounting panels

E – total width of pocket doorframe

F – maximum thickness of door leaf

G – internal dimensions of frame

H – total height of pocket doorframe

I – floor–rail height (verification of positioning on the finished floor)

J – height of net passage after installation of mounting panels

K – external dimensions of pocket doorframe

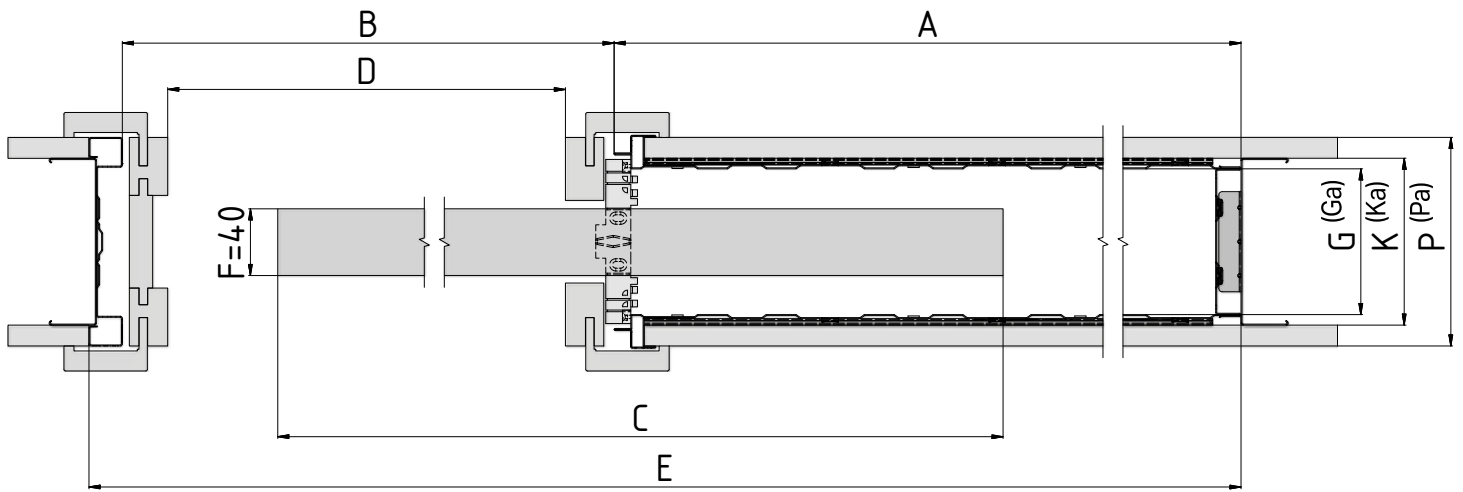
L – standard height of door leaf

P – Minimum thickness of finished partition

DATA NECESSARY FOR ORDERING NORMA STANDARD POCKET DOORFRAME

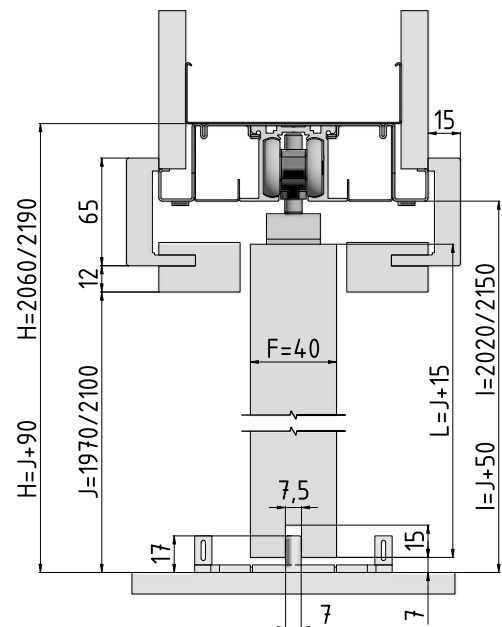
- Clear passage dimensions: D × J
- Partition type: Drywall × masonry
- Thickness of pocket doorframe and finished partition

- Outer thickness (K) of the NORMA STANDARD pocket door-frame is 100 mm = finished partition is 125 mm.
- Alternative thickness (Ka) of the NORMA STANDARD masonry and drywall pocket doorframe is 75 mm = the finished partition is 100 mm.
- Clearance of pocket doorframe G clinched = 87 mm, Ga clinched = 62 mm.
- The hole must be provided with a lintel — the pocket door-frame cannot bear a load.
- The standard net passage is 1970 mm and 2100 mm for all types of pocket doorframes. Custom dimensions from 1980 up to 2700 mm.
- For custom pocket doorframe dimensions, the pocket door-frame clearance is G = 78 mm for P = 125 mm and Ga = 52 mm for P = 100 mm drywall partition and Ga = 62 mm for P = 100 mm masonry partition. The width of the sheet metal pocket doorframe A and the total width of the pocket doorframe E is 10 mm narrower for custom dimensions than it is for the standard dimensions listed.



Horizontal cross-section of the NORMA STANDARD clinched pocket doorframe with wooden door leaf 40 mm thick.

Vertical cross-section of the NORMA STANDARD clinched pocket doorframe with a wooden door leaf 40 mm thick.



Accessories for pocket doorframes

NORMA STANDARD

All accessories and joining material included.

INCLUDED IN THE PACKAGE

Set of travelling mechanisms

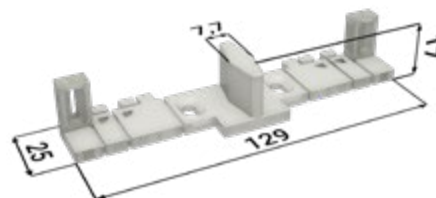
1 rail add-on



2 door racks



1 guide pin



2 stops



2 carriages



ACCESSORIES AT EXTRA CHARGE

Soft closing mechanism for wooden (≤ 60 kg)
+ activator

1 soft closing mechanism



1 activators



Soft closing mechanism for glass door (60–85 kg)
+ activator

1 soft closing mechanism



1 activators



Soft closing mechanism for glass door (85–120 kg)
+ activator

1 soft closing mechanism



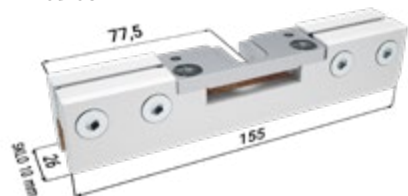
1 activators



● To damp both sides, two single-sided damping systems must be used.

Fixtures kit for the Vetro 22 glass door leaf with sliding guide

2 Vetros



DATA NECESSARY FOR ORDERING INSTALLATION PACKAGES FOR NORMA STANDARD POCKET DOORFRAME

- Net passage dimensions of pocket doorframe
- Weight of door leaf

NORMA STANDARD pocket doorframe fitted with a wooden door leaf



NORMA STANDARD pocket doorframe fitted with IDEA door



NORMA STANDARD pocket doorframe fitted with IDEALINE door



NORMA STANDARD pocket doorframe fitted with MASTER door



NORMA STANDARD pocket doorframe fitted with an all-glass door leaf



Pocket doorframe NORMA KOMFORT

NORMA KOMFORT pocket door frame



This model is a set of two framed pocket door-frames interconnected by a guide rail. Each pocket is intended for one single-leaf door that slides out against itself. Movement of door leaves is synchronized – synchronized track for KOMFORT included in price.

- A clinched pocket door frame is supplied for standard passage heights of 1970 and 2100
- A welded pocket doorframe is provided for other passage heights.
- Optional non-standard dimensions to passage height of 2700 mm
- Used for drywall or masonry
- For masonry partitions, the hole must be provided with a lintel — the pocket doorframe cannot bear a load.
- For wooden, all-glass, MASTER and IDEA doors
- Compatible with all makes of door
- Maximum weight per door leaf is 120 kg
- High-quality, very quiet travelling mechanism in a special aluminium slat
- Removable upper rail
- Adjustable front and rear stop
- Option to purchase a damping stop for gradual door closing
- A switch can be placed in the frame pocket
- Entire frame made of high-quality galvanized sheet metal
- Guide pin with precise delimitation at the centre of the frame
- 10-year warranty



Dimensions of pocket doorframe

NORMA KOMFORT

All dimensions are in millimetres.

Maximum dimensions of door leaf (F) for K 100: 68.

Maximum thickness of door leaf (Fa) for Ka 75: 52.

NORMA KOMFORT 1970 mm

Height of net passage after installation of mounting panels (J): 1970.

Total height of the pocket doorframe (H): 2060.

Standard height of the door leaf (L): 1985.

Net passage after mounting panels min. (D × J)	Overall dimensions of pocket doorframe (E × H)	Width of sheet metal pocket (A)	Width of passage after installation of pocket doorframe (B)	Standard dimensions of door leaf (C × L)	Dimensions of rough construction opening in drywall	Recommended dimensions for rough structural hole in masonry systems
1250 × 1970	2630 × 2060	665	1300	(650 × 2) × 1985	2630 × 2060	2670 × 2080
1450 × 1970	3030 × 2060	765	1500	(750 × 2) × 1985	3030 × 2060	3070 × 2080
1650 × 1970	3430 × 2060	865	1700	(850 × 2) × 1985	3430 × 2060	3470 × 2080
1850 × 1970	3830 × 2060	965	1900	(950 × 2) × 1985	3830 × 2060	3870 × 2080
2050 × 1970	4230 × 2060	1065	2100	(1050 × 2) × 1985	4230 × 2060	4270 × 2080
2250 × 1970	4630 × 2060	1165	2300	(1150 × 2) × 1985	4630 × 2060	4670 × 2080
2450 × 1970	5030 × 2060	1265	2500	(1250 × 2) × 1985	5030 × 2060	5070 × 2080

NORMA KOMFORT 2100 mm

Height of net passage after installation of mounting panels (J): 2100.

Total height of the pocket doorframe (H): 2190.

Standard height of the door leaf (L): 2115.

Net passage after mounting panels min. (D × J)	Overall dimensions of pocket doorframe (E × H)	Width of sheet metal pocket (A)	Width of passage after installation of pocket doorframe (B)	Standard dimensions of door leaf (C × L)	Dimensions of rough construction opening in drywall	Recommended dimensions for rough structural hole in masonry systems
1250 × 2100	2630 × 2190	665	1300	(650 × 2) × 2115	2630 × 2190	2670 × 2210
1450 × 2100	3030 × 2190	765	1500	(750 × 2) × 2115	3030 × 2190	3070 × 2210
1650 × 2100	3430 × 2190	865	1700	(850 × 2) × 2115	3430 × 2190	3470 × 2210
1850 × 2100	3830 × 2190	965	1900	(950 × 2) × 2115	3830 × 2190	3870 × 2210
2050 × 2100	4230 × 2190	1065	2100	(1050 × 2) × 2115	4230 × 2190	4270 × 2210
2250 × 2100	4630 × 2190	1165	2300	(1150 × 2) × 2115	4630 × 2190	4670 × 2210
2450 × 2100	5030 × 2190	1265	2500	(1250 × 2) × 2115	5030 × 2190	5070 × 2210

A – width of sheet metal pocket

B – width of passage after installation of pocket doorframe

C – standard width of door leaf

D – width of net passage after installation of mounting panels

E – total width of pocket doorframe

F – maximum thickness of door leaf

G – internal dimensions of frame

H – total height of pocket doorframe

I – floor–rail height (verification of positioning on the finished floor)

J – height of net passage after installation of mounting panels

K – external dimensions of pocket doorframe

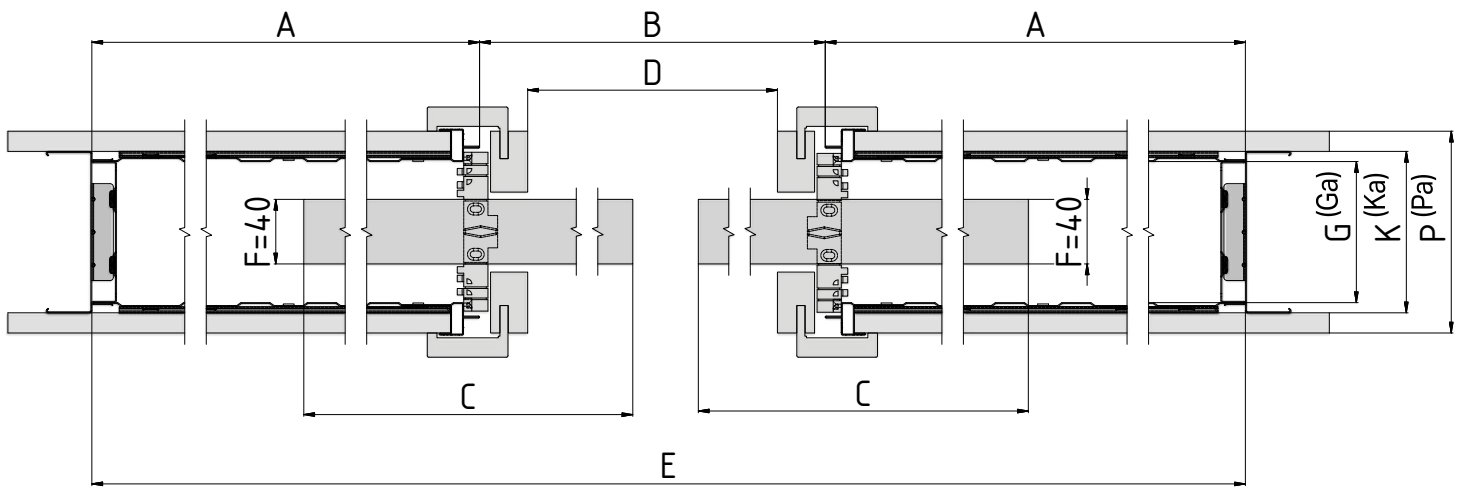
L – standard height of door leaf

P – Minimum thickness of finished partition

DATA NECESSARY FOR ORDERING NORMA KOMFORT POCKET DOORFRAME

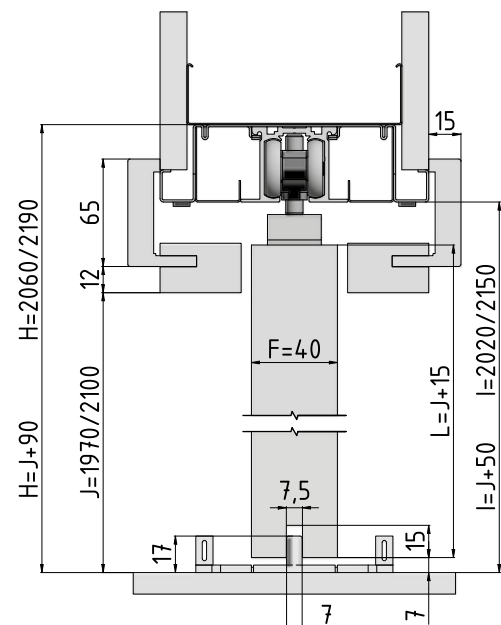
- Clear passage dimensions: D × J
- Partition type: Drywall × masonry
- Thickness of pocket doorframe and finished partition

- Outer thickness (K) of the NORMA KOMFORT pocket door-frame is 100 mm = finished partition is 125 mm.
 - Alternative thickness (Ka) of the NORMA KOMFORT masonry and drywall pocket doorframe is 75 mm = the finished partition is 100 mm.
- Clearance of pocket doorframe G clinched = 87 mm,
Ga clinched = 62 mm.
- The hole must be provided with a lintel — the pocket door-frame cannot bear a load.
 - The standard net passage is 1970 mm and 2100 mm for all types of pocket doorframes. Custom dimensions from 1980 up to 2700 mm.
 - For custom pocket doorframe dimensions, the pocket door-frame clearance is G = 78 mm for P = 125 mm and Ga = 52 mm for P = 100 mm drywall partition and Ga = 62 mm for P = 100 mm masonry partition. The width of the sheet metal pocket doorframe A and the total width of the pocket door-frame E is 10 mm narrower for custom dimensions than it is for the standard dimensions listed.



Horizontal cross-section of a NORMA KOMFORT clinched pocket doorframe with a wooden door leaf 40 mm thick.

Vertical cross-section of a NORMA KOMFORT clinched pocket doorframe with a wooden door leaf 40 mm thick.



Accessories for pocket doorframes

NORMA KOMFORT

All accessories and joining material included.

INCLUDED IN THE PACKAGE

Set of travelling mechanisms

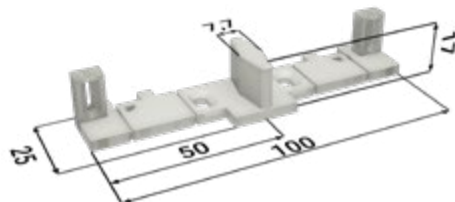
1 rail add-on



4 door racks



2 guide pin



4 stops

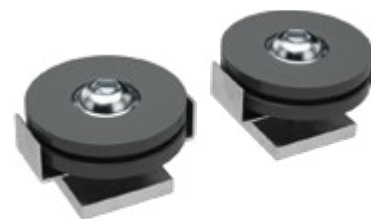


4 carriages



ACCESSORIES FREE OF CHARGE

Synchronizing mechanism package



ACCESSORIES AT EXTRA CHARGE

Soft closing mechanism for wooden (≤ 60 kg)
+ activator

2 soft closing mechanisms



2 activators



Soft closing mechanism for glass door (60–85 kg) + activator

2 soft closing mechanisms

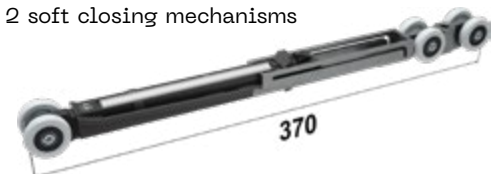


2 activators



Soft closing mechanism for glass door (85–120 kg)
+ activator

2 soft closing mechanisms



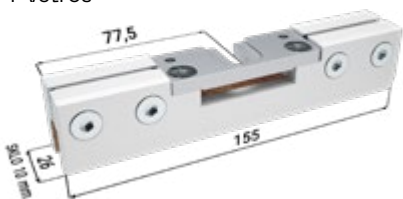
2 activators



- To damp both sides, two single-sided damping systems must be used.

Fixtures kit for the Vetro 22 glass door leaf with sliding guide

4 Vetros



DATA NECESSARY FOR ORDERING SOFT CLOSING MECHANISM FOR NORMA KOMFORT POCKET DOORFRAME

- Clear passage dimensions of pocket doorframe
- Weight of door leaf

Pocket doorframe NORMA UNIBOX

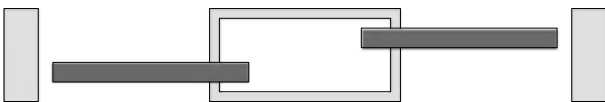
NORMA UNIBOX pocket doorframe



This is a welded double pocket doorframe where two single-leaf doors close off two adjacent rooms. Each leaf moves separately.

- Optional non-standard dimensions to passage height of 2700 mm
- Used for drywall or masonry
- For masonry partitions, the hole must be provided with a lintel — the pocket doorframe cannot bear a load.
- For wooden, all-glass, MASTER and IDEA doors
- Compatible with all makes of door
- Maximum weight per door leaf is 120 kg
- High-quality, very quiet travelling mechanism in a special aluminium slat
- Removable upper rail
- Adjustable front and rear stop
- Option to purchase a damping stop for gradual door closing
- A switch can be placed in the frame pocket
- Entire frame made of high-quality galvanized sheet metal
- Guide pin with precise delimitation at the centre of the frame
- 10-year warranty

NORMA UNIBOX pocket doorframe – right



NORMA UNIBOX pocket doorframe – left



Dimensions of pocket doorframe

NORMA UNIBOX

All dimensions are in millimetres.

Maximum thickness of door leaf (F) for K 175: 65.

NORMA UNIBOX 1970 mm

Height of net passage after installation of mounting panels (J): 1970.

Total height of the pocket doorframe (H): 2070.

Standard height of the door leaf (L): 1985.

Net passage after mounting panels min. (D × J)	Overall dimensions of pocket doorframe (E × H)	Width of sheet metal pocket (A)	Width of passage after installation of pocket doorframe (B)	Standard dimensions of door leaf (C × L)	Dimensions of rough construction opening in drywall	Recommended dimensions for rough structural hole in masonry systems
(600 × 2) × 1970	2020 × 2070	660	660 × 2	650 × 1985	2020 × 2070	2060 × 2090
(700 × 2) × 1970	2320 × 2070	760	760 × 2	750 × 1985	2320 × 2070	2360 × 2090
(800 × 2) × 1970	2620 × 2070	860	860 × 2	850 × 1985	2620 × 2070	2660 × 2090
(900 × 2) × 1970	2920 × 2070	960	960 × 2	950 × 1985	2920 × 2070	2960 × 2090
(1000 × 2) × 1970	3220 × 2070	1060	1060 × 2	1050 × 1985	3220 × 2070	3260 × 2090
(1100 × 2) × 1970	3520 × 2070	1160	1160 × 2	1150 × 1985	3520 × 2070	3560 × 2090
(1200 × 2) × 1970	3820 × 2070	1260	1260 × 2	1250 × 1985	3820 × 2070	3860 × 2090

NORMA UNIBOX 2100 mm

Height of net passage after installation of mounting panels (J): 2100.

Total height of the pocket doorframe (H): 2200.

Standard height of the door leaf (L): 2115.

Net passage after mounting panels min. (D × J)	Overall dimensions of pocket doorframe (E × H)	Width of sheet metal pocket (A)	Width of passage after installation of pocket doorframe (B)	Standard dimensions of door leaf (C × L)	Dimensions of rough construction opening in drywall	Recommended dimensions for rough structural hole in masonry systems
(600 × 2) × 2100	2020 × 2200	660	660 × 2	650 × 2115	2020 × 2200	2060 × 2190
(700 × 2) × 2100	2320 × 2200	760	760 × 2	750 × 2115	2320 × 2200	2360 × 2190
(800 × 2) × 2100	2620 × 2200	860	860 × 2	850 × 2115	2620 × 2200	2660 × 2190
(900 × 2) × 2100	2920 × 2200	960	960 × 2	950 × 2115	2920 × 2200	2960 × 2190
(1000 × 2) × 2100	3220 × 2200	1060	1060 × 2	1050 × 2115	3220 × 2200	3260 × 2190
(1100 × 2) × 2100	3520 × 2200	1160	1160 × 2	1150 × 2115	3520 × 2200	3560 × 2190
(1200 × 2) × 2100	3820 × 2200	1260	1260 × 2	1250 × 2115	3820 × 2200	3860 × 2190

A – width of sheet metal pocket

B – width of passage after installation of pocket doorframe

C – standard width of door leaf

D – width of net passage after installation of mounting panels

E – total width of pocket doorframe

F – maximum thickness of door leaf

G – internal dimensions of frame

H – total height of pocket doorframe

I – floor–rail height (verification of positioning on the finished floor)

J – height of net passage after installation of mounting panels

K – external dimensions of pocket doorframe

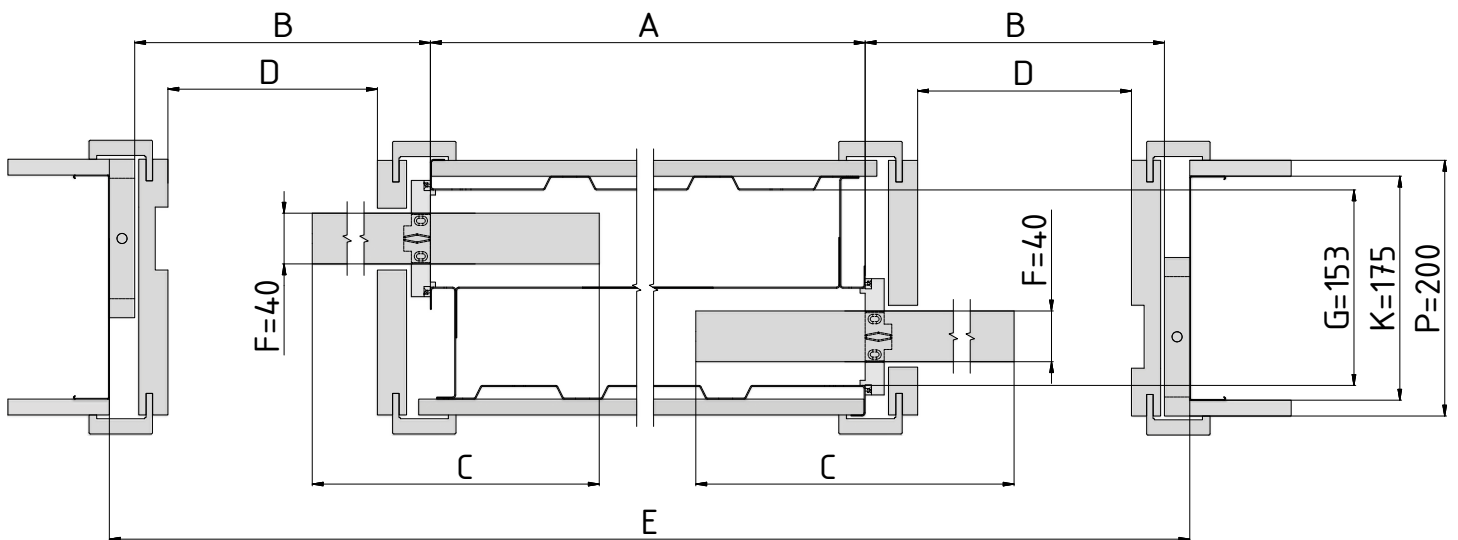
L – standard height of door leaf

P – Minimum thickness of finished partition

DATA NECESSARY FOR ORDERING NORMA UNIBOX POCKET DOORFRAME

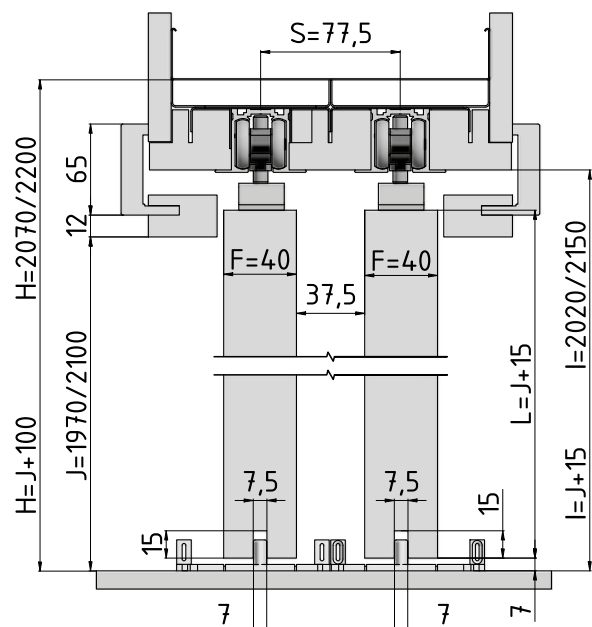
- Clear passage dimensions: D × J
- Partition type: Drywall × masonry
- Pocket doorframe type: right × left

- Outer thickness (K) of the NORMA UNIBOX pocket doorframe is 175 mm = finished partition is 200 mm.
- The hole must be provided with a lintel — the pocket doorframe cannot bear a load.
- The standard net passage is 1970 mm and 2100 mm for all types of pocket doorframes.
- Optional non-standard dimensions to passage height of 2700 mm.



Horizontal cross-section of NORMA UNIBOX pocket doorframe with a wooden door leaf 40 mm thick.

Vertical cross-section of NORMA UNIBOX pocket doorframe with a wooden door leaf 40 mm thick.



Accessories for pocket doorframes

NORMA UNIBOX

All accessories and joining material included.

INCLUDED IN THE PACKAGE

Set of travelling mechanisms

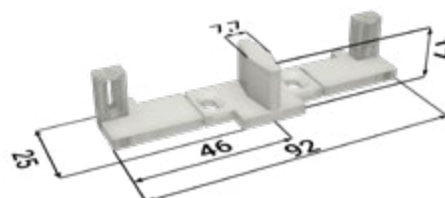
2 rail add-ons



4 door racks



2 guide pin



4 stops



4 carriages



ACCESSORIES AT EXTRA CHARGE

Soft closing mechanism for wooden (≤ 60 kg)
+ activator

2 soft closing mechanisms



2 activators



Soft closing mechanism for glass door (60–85 kg)
+ activator

2 soft closing mechanisms



2 activators



Soft closing mechanism for glass door (85–120 kg)
+ activator

2 soft closing mechanisms



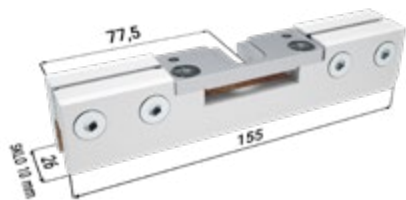
2 activators



- To damp both sides, two single-sided damping systems must be used.

Fixtures kit for the Vetro 22 glass door leaf with sliding guide

4 Vetros



DATA NECESSARY FOR ORDERING SOFT CLOSING MECHANISM FOR NORMA UNIBOX POCKET DOORFRAME

- Net passage dimensions of pocket doorframe
- Weight of door leaf

Pocket doorframe NORMA PARALLEL

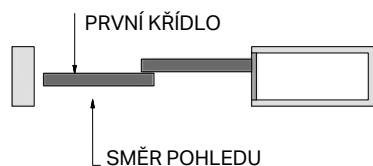
NORMA PARALLEL pocket doorframe



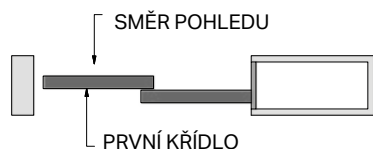
A type of welded mounting panel pocket doorframe in which two door leaves close behind each other in the same direction. Movement of door leaves is synchronized – Synchronized track for PARALLEL included in price.

- For this type, all-glass doors cannot be used
- For wooden MASTER doors
- Optional non-standard dimensions to passage height of 2700 mm
- Used for drywall or masonry
- For masonry partitions, the hole must be provided with a lintel – the pocket doorframe cannot bear a load.
- Compatible with all makes of door
- Maximum weight per door leaf is 120 kg
- High-quality, very quiet travelling mechanism in a special aluminium slat
- Removable upper rail
- Adjustable front and rear stop
- A switch can be placed in the frame pocket
- Entire frame made of high-quality galvanized sheet metal
- Guide pin with precise delimitation at the centre of the frame
- 10-year warranty

NORMA PARALLEL pocket doorframe – right



NORMA PARALLEL pocket doorframe –left



Dimensions of pocket doorframe

NORMA PARALLEL

All dimensions are in millimetres.

Maximum thickness of door leaf (F) for K 175: 65.

NORMA PARALLEL 1970 mm

Height of net passage after installation of mounting panels (J): 1970.

Total height of the pocket doorframe (H): 2070.

Standard height of the door leaf (L): 1985.

Net passage after mounting panels min. (D × J)	Overall dimensions of pocket doorframe (E × H)	Width of sheet metal pocket (A)	Width of passage after installation of pocket doorframe (B)	Standard dimensions of door leaf (C × L)	Dimensions of rough construction opening in drywall	Recommended dimensions for rough structural hole in masonry systems
1250 × 1970	1985 × 2070	655	1310	(650 × 2) × 1985	1985 × 2070	2025 × 2090
1450 × 1970	2285 × 2070	755	1510	(750 × 2) × 1985	2285 × 2070	2325 × 2090
1650 × 1970	2585 × 2070	855	1710	(850 × 2) × 1985	2585 × 2070	2625 × 2090
1850 × 1970	2885 × 2070	955	1910	(950 × 2) × 1985	2885 × 2070	2925 × 2090
2050 × 1970	3185 × 2070	1055	2110	(1050 × 2) × 1985	3185 × 2070	3225 × 2090
2250 × 1970	3485 × 2070	1155	2310	(1150 × 2) × 1985	3485 × 2070	3525 × 2090
2450 × 1970	3785 × 2070	1255	2510	(1250 × 2) × 1985	3785 × 2070	3825 × 2090

NORMA PARALLEL 2100 mm

Height of net passage after installation of mounting panels (J): 2100.

Total height of the pocket doorframe (H): 2200.

Standard height of the door leaf (L): 2115.

Net passage after mounting panels min. (D × J)	Overall dimensions of pocket doorframe (E × H)	Width of sheet metal pocket (A)	Width of passage after installation of pocket doorframe (B)	Standard dimensions of door leaf (C × L)	Dimensions of rough construction opening in drywall	Recommended dimensions for rough structural hole in masonry systems
1250 × 2100	1985 × 2200	655	1310	(650 × 2) × 2115	1985 × 2200	2025 × 2220
1450 × 2100	2285 × 2200	755	1510	(750 × 2) × 2115	2285 × 2200	2325 × 2220
1650 × 2100	2585 × 2200	855	1710	(850 × 2) × 2115	2585 × 2200	2625 × 2220
1850 × 2100	2885 × 2200	955	1910	(950 × 2) × 2115	2885 × 2200	2925 × 2220
2050 × 2100	3185 × 2200	1055	2110	(1050 × 2) × 2115	3185 × 2200	3225 × 2220
2250 × 2100	3485 × 2200	1155	2310	(1150 × 2) × 2115	3485 × 2200	3525 × 2220
2450 × 2100	3785 × 2200	1255	2510	(1250 × 2) × 2115	3785 × 2200	3825 × 2220

A – width of sheet metal pocket

B – width of passage after installation of pocket doorframe

C – standard width of door leaf

D – width of net passage after installation of mounting panels

E – total width of pocket doorframe

F – maximum thickness of door leaf

G – internal dimensions of frame

H – total height of pocket doorframe

I – floor–rail height (verification of positioning on the finished floor)

J – height of net passage after installation of mounting panels

K – external dimensions of pocket doorframe

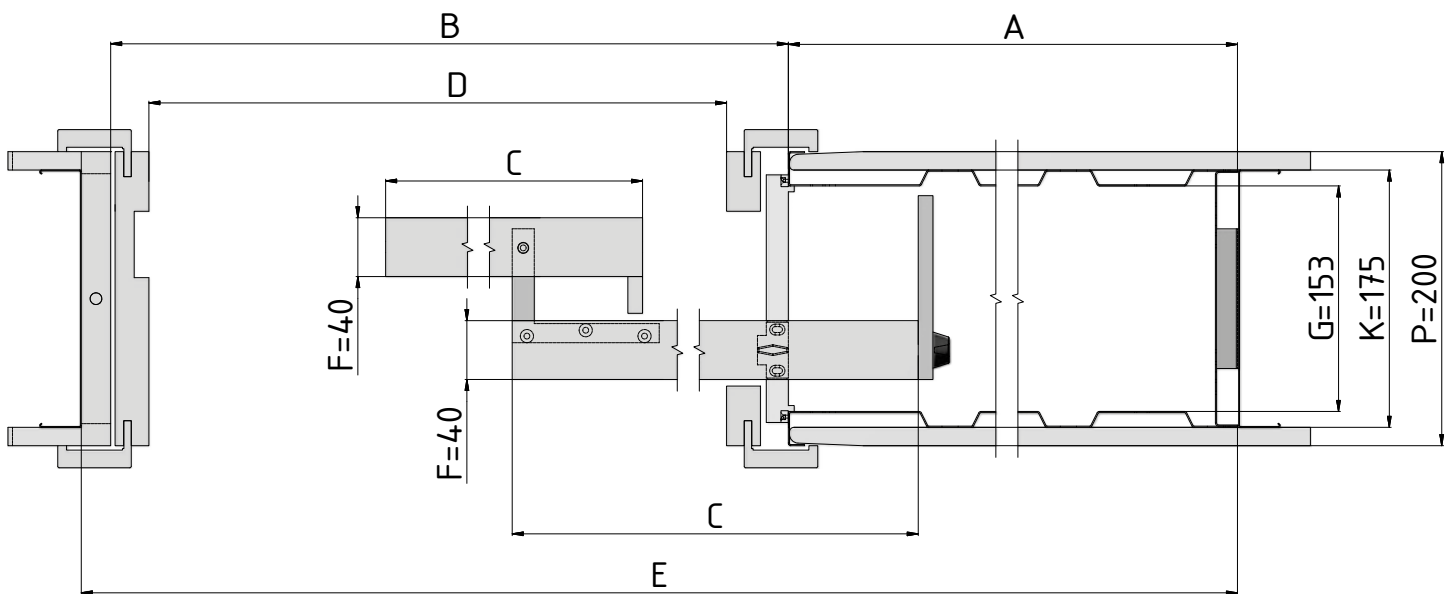
L – standard height of door leaf

P – Minimum thickness of finished partition

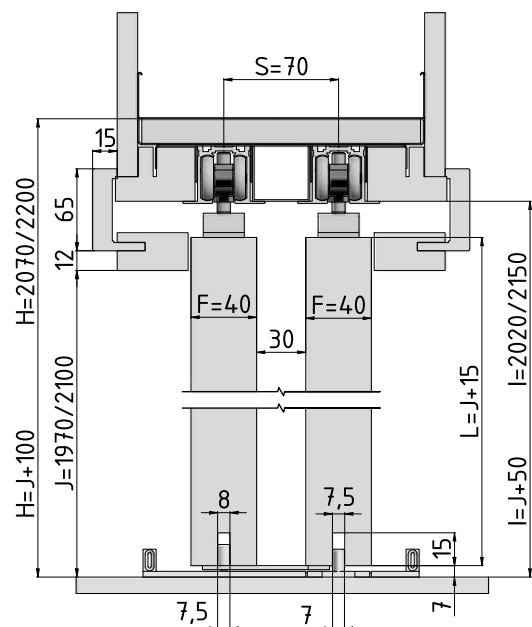
DATA NECESSARY FOR ORDERING NORMA PARALLEL POCKET DOORFRAME

- Clear passage dimensions: D × J
- Partition type: Drywall × masonry
- Pocket doorframe type: right × left

- Outer thickness (K) of the NORMA PARALLEL pocket door-frame is 175 mm = finished partition is 200 mm.
- Clearance of pocket doorframe G = 153 mm.
- The hole must be provided with a lintel — the pocket door-frame cannot bear a load.
- The standard net passage is 1970 mm and 2100 mm for all types of pocket doorframes.
- Optional non-standard dimensions to passage height of 2700 mm.



Horizontal cross-section of NORMA PARALLEL pocket doorframe with a wooden door leaf 40 mm thick.



Vertical cross-section of NORMA PARALLEL frame with wooden door leaf 40 mm thick.

Accessories for NORMA PARALLEL pocket door frames

All accessories and joining material included.

INCLUDED IN THE PACKAGE

Set of travelling mechanisms

2 rail add-ons



4 door racks



1 guide pins, left



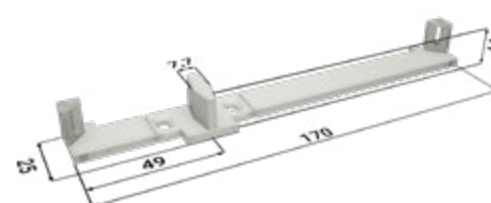
4 stops



4 carriages

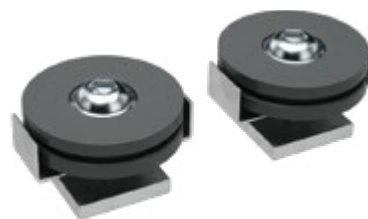


1 guide pins, right



ACCESSORIES FREE OF CHARGE

Synchronizing mechanism package



METALO steel mounting panel for NORMA, LATENTE AND PROFIKIT pocket doorframes

METALO steel mounting panel

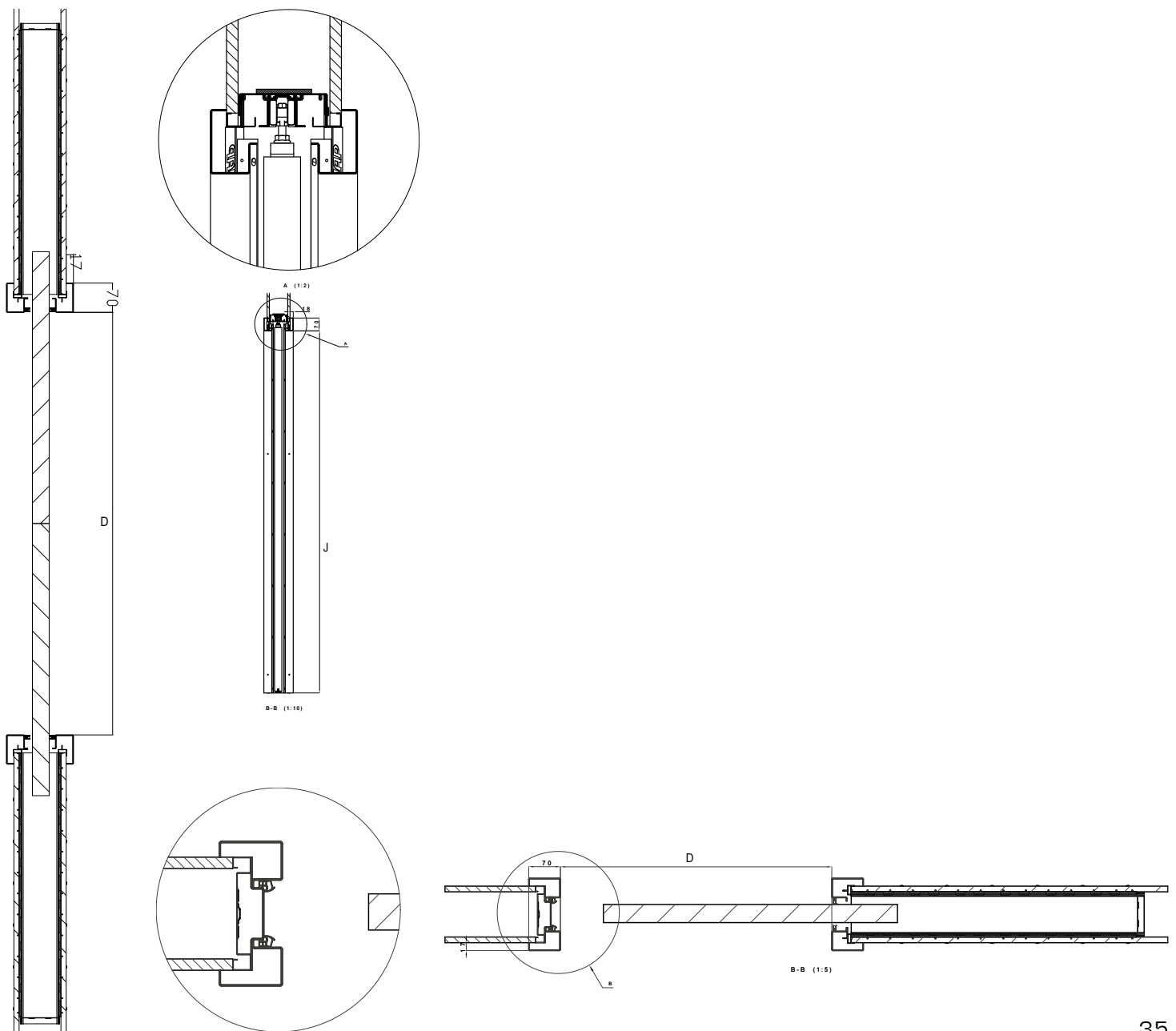


Additional assemblable steel mounting panel for NORMA, LATENTE or PROFIKIT frames. The mounting panel is suitable for loading and commercial spaces. Suitable primarily for production halls, hospitals, and retirement homes.

The doorframes are made of steel, with optional painting from the RAL, K7, NCS or CREATIVE METALLIC swatch books. Single-leaf and double-leaf version.

D – Width of net passage after installation of mounting panels

J – Height of net passage after installation of mounting panels



Pocket doorframe

PROFIKIT STANDARD / KOMFORT

PROFIKIT STANDARD pocket doorframe



PROFIKIT STANDARD



PROFIKIT KOMFORT



Detail of an inserted standing leg and door header



Insertion of the brace



Detail of standing leg



KOMFORT door header connection



Pocket doorframe PROFIKIT STANDARD

PROFIKIT STANDARD pocket doorframe



This model is a type of folding pocket for single-leaf sliding doors and is intended for installing mounting panel doorframes. Pocket door-frame only for drywall partitions.

- PROFIKIT frames do not come in custom dimensions
- For wooden, all-glass, MASTER and IDEA doors
- Maximum weight per door leaf is 60 kg
- Compatible with all makes of door
- The pocket doorframe cannot bear a load
- Removable upper rail
- Adjustable front and rear stop
- Option to purchase a damping stop for gradual door closing
- Takes 6 times less transport and storage space than ordinary pocket doorframe
- Better handling at construction site (loading, unloading, transfer)
- 10-year warranty



Dimensions of pocket doorframe

PROFIKIT STANDARD

All dimensions are in millimetres.

Maximum dimensions of door leaf (F) for K 100: 65.

Maximum thickness of door leaf (F) for K 75: 40.

PROFIKIT STANDARD 1970 mm

Height of net passage after installation of mounting panels (J): 1970.

Total height of the pocket doorframe (H): 2060.

Standard height of the door leaf (L): 1985.

Net passage after mounting panels min. (D × J)	Overall dimensions of pocket doorframe (E × H)	Width of sheet metal pocket (A)	Width of passage after installation of pocket doorframe (B)	Standard dimensions of door leaf (C × L)	Dimensions of rough construction opening in drywall
600 × 1970	1345 × 2060	650	670	650 × 1985	1345 × 2060
700 × 1970	1545 × 2060	750	770	750 × 1985	1545 × 2060
800 × 1970	1745 × 2060	850	870	850 × 1985	1745 × 2060
900 × 1970	1945 × 2060	950	970	950 × 1985	1945 × 2060
1000 × 1970	2145 × 2060	1050	1070	1050 × 1985	2145 × 2060
1100 × 1970	2345 × 2060	1150	1170	1150 × 1985	2345 × 2060
1200 × 1970	2545 × 2060	1250	1270	1250 × 1985	2545 × 2060

PROFIKIT STANDARD 2100 mm

Height of net passage after installation of mounting panels (J): 2100.

Total height of the pocket doorframe (H): 2190.

Standard height of the door leaf (L): 2115.

Net passage after mounting panels min. (D × J)	Overall dimensions of pocket doorframe (E × H)	Width of sheet metal pocket (A)	Width of passage after installation of pocket doorframe (B)	Standard dimensions of door leaf (C × L)	Dimensions of rough construction opening in drywall
600 × 2100	1345 × 2190	650	670	650 × 2115	1345 × 2190
700 × 2100	1545 × 2190	750	770	750 × 2115	1545 × 2190
800 × 2100	1745 × 2190	850	870	850 × 2115	1745 × 2190
900 × 2100	1945 × 2190	950	970	950 × 2115	1945 × 2190
1000 × 2100	2145 × 2190	1050	1070	1050 × 2115	2145 × 2190
1100 × 2100	2345 × 2190	1150	1170	1150 × 2115	2345 × 2190
1200 × 2100	2545 × 2190	1250	1270	1250 × 2115	2545 × 2190

A – width of sheet metal pocket

B – width of passage after installation of pocket doorframe

C – standard width of door leaf

D – width of net passage after installation of mounting panels

E – total width of pocket doorframe

F – maximum thickness of door leaf

G – internal dimensions of frame

H – total height of pocket doorframe

I – floor–rail height (verification of positioning on the finished floor)

J – height of net passage after installation of mounting panels

K – external dimensions of pocket doorframe

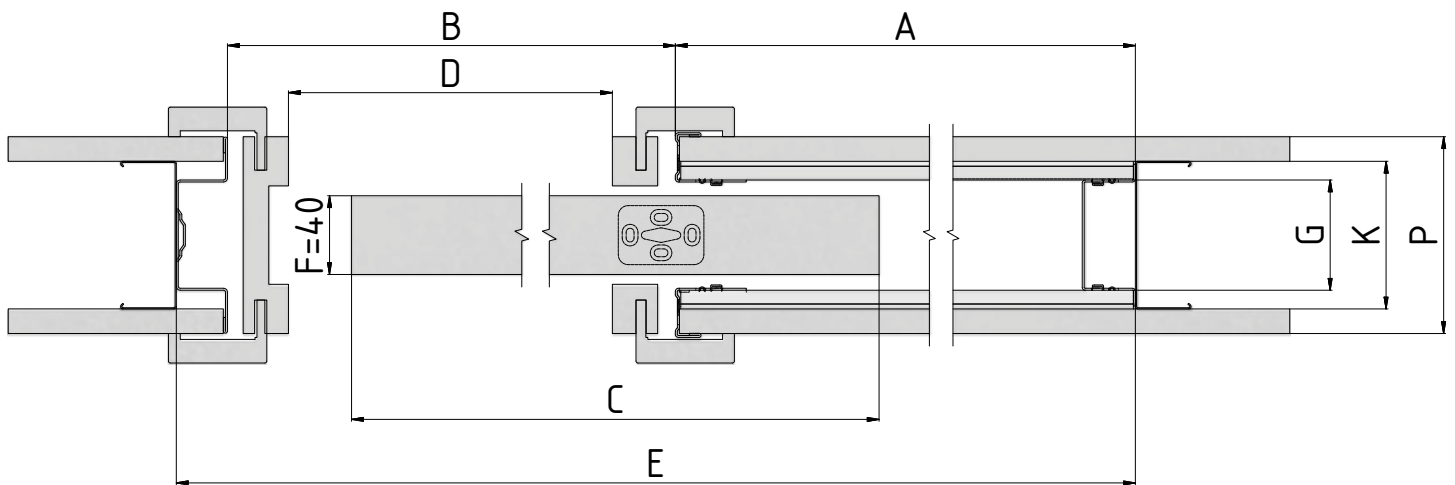
L – standard height of door leaf

P – Minimum thickness of finished partition

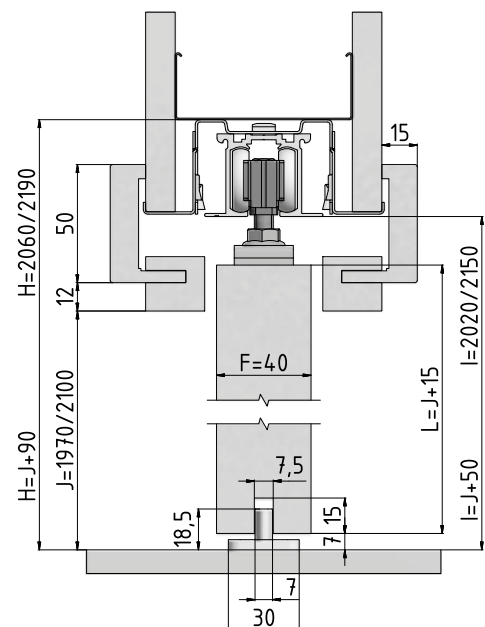
DATA NECESSARY FOR ORDERING PROFIKIT STANDARD POCKET DOORFRAME:

- Clear passage dimensions: D × J
- Thickness of finished partition

- The construction opening corresponds to the pocket door frame dimensions — after its insertion into the construction opening, the opening must be adapted by sliding the CW or UA profiles towards the pocket door frame. The pocket door-frame cannot bear a load.
- Outer thickness K of the pocket doorframe is 100 mm = finished partition is P = 125 mm. Alternative thickness of the pocket doorframe Ka 75 mm = thickness of the completed partition Pa 100 mm — applies only to passage height 1970 mm.
- Clearance of the pocket for the completed pocket thickness P = 125 mm is G = 79 mm.
- Clearance of the pocket doorframe for the completed partition thickness Pa = 100 mm is Ga = 54 mm.
- Standard clear passage is 1970 mm and 2100 mm. We do not produce non-standard dimensions.



Horizontal cross-section of the PROFIKIT STANDARD pocket doorframe with a wooden door leaf 40 mm thick.



Vertical cross-section of the PROFIKIT STANDARD frame with wooden door leaf 40 mm thick.

Accessories for pocket doorframes

PROFIKIT STANDARD

All accessories and joining material included.

INCLUDED IN THE PACKAGE

Set of travelling mechanisms

1 rail add-on



2 door racks



1 guide pin



2 stops



2 carriages



6 drywall hangers



ACCESSORIES AT EXTRA CHARGE

Soft closing mechanism for wooden (≤ 60 kg)

+ activator

1 soft closing mechanism



1 activators



Soft closing mechanism for glass door (60–85 kg) + activator

1 soft closing mechanism



1 activators



Soft closing mechanism for glass door (85–120 kg) + activator

1 soft closing mechanism



1 activators



● To damp both sides, two single-sided damping systems must be used.

DATA NECESSARY FOR ORDERING SOFT CLOSING MECHANISM FOR PROFIKIT STANDARD POCKET DOORFRAME

- Net passage dimensions of pocket doorframe
- Weight of door leaf

Pocket doorframe PROFIKIT KOMFORT

PROFIKIT KOMFORT pocket doorframe



This model is a type of folding pocket for single-leaf sliding doors and is intended for installing mounting panel doorframes. Pocket doorframe only for drywall partitions.

- PROFIKIT frames do not come in custom dimensions
- Pocket doorframe only for drywall
- For wooden, all-glass, MASTER and IDEA doors
- Maximum weight per door leaf is 60 kg
- Compatible with all makes of door
- The pocket doorframe cannot bear a load
- Removable upper rail
- Adjustable front and rear stop
- Option to purchase a damping stop for gradual door closing
- Takes 6 times less transport and storage space than ordinary pocket doorframe
- Better handling at construction site (loading, unloading, transfer)
- 10-year warranty



Dimensions of pocket doorframe

PROFIKIT KOMFORT

All dimensions are in millimetres.

Maximum dimensions of door leaf (F) for K 100: 65.

Maximum thickness of door leaf (Fa) for Ka 75: 40.

PROFIKIT KOMFORT 1970 mm

Height of net passage after installation of mounting panels (J): 1970.

Total height of the pocket doorframe (H): 2060.

Standard height of the door leaf (L): 1985.

Net passage after mounting panels min. (D × J)	Overall dimensions of pocket doorframe (E × H)	Width of sheet metal pocket (A)	Width of passage after installation of pocket doorframe (B)	Standard dimensions of door leaf (C × L)	Dimensions of rough construction opening in drywall
1250 × 1970	2600 × 2060	650	1300	(650 × 2) × 1985	2600 × 2060
1450 × 1970	3000 × 2060	750	1500	(750 × 2) × 1985	3000 × 2060
1650 × 1970	3400 × 2060	850	1700	(850 × 2) × 1985	3400 × 2060
1850 × 1970	3800 × 2060	950	1900	(950 × 2) × 1985	3800 × 2060
2050 × 1970	4200 × 2060	1050	2100	(1050 × 2) × 1985	4200 × 2060
2250 × 1970	4600 × 2060	1150	2300	(1150 × 2) × 1985	4600 × 2060
2450 × 1970	5000 × 2060	1250	2500	(1250 × 2) × 1985	5000 × 2060

PROFIKIT KOMFORT 2100 mm

Height of net passage after installation of mounting panels (J): 2100.

Total height of the pocket doorframe (H): 2190.

Standard height of the door leaf (L): 2115.

Net passage after mounting panels min. (D × J)	Overall dimensions of pocket doorframe (E × H)	Width of sheet metal pocket (A)	Width of passage after installation of pocket doorframe (B)	Standard dimensions of door leaf (C × L)	Dimensions of rough construction opening in drywall
1250 × 2100	2600 × 2190	650	1300	(650 × 2) × 2115	2600 × 2190
1450 × 2100	3000 × 2190	750	1500	(750 × 2) × 2115	3000 × 2190
1650 × 2100	3400 × 2190	850	1700	(850 × 2) × 2115	3400 × 2190
1850 × 2100	3800 × 2190	950	1900	(950 × 2) × 2115	3800 × 2190
2050 × 2100	4200 × 2190	1050	2100	(1050 × 2) × 2115	4200 × 2190
2250 × 2100	4600 × 2190	1150	2300	(1150 × 2) × 2115	4600 × 2190
2450 × 2100	5000 × 2190	1250	2500	(1250 × 2) × 2115	5000 × 2190

A – width of sheet metal pocket

B – width of passage after installation of pocket doorframe

C – standard width of door leaf

D – width of net passage after installation of mounting panels

E – total width of pocket doorframe

F – maximum thickness of door leaf

G – internal dimensions of frame

H – total height of pocket doorframe

I – floor–rail height (verification of positioning on the finished floor)

J – height of net passage after installation of mounting panels

K – external dimensions of pocket doorframe

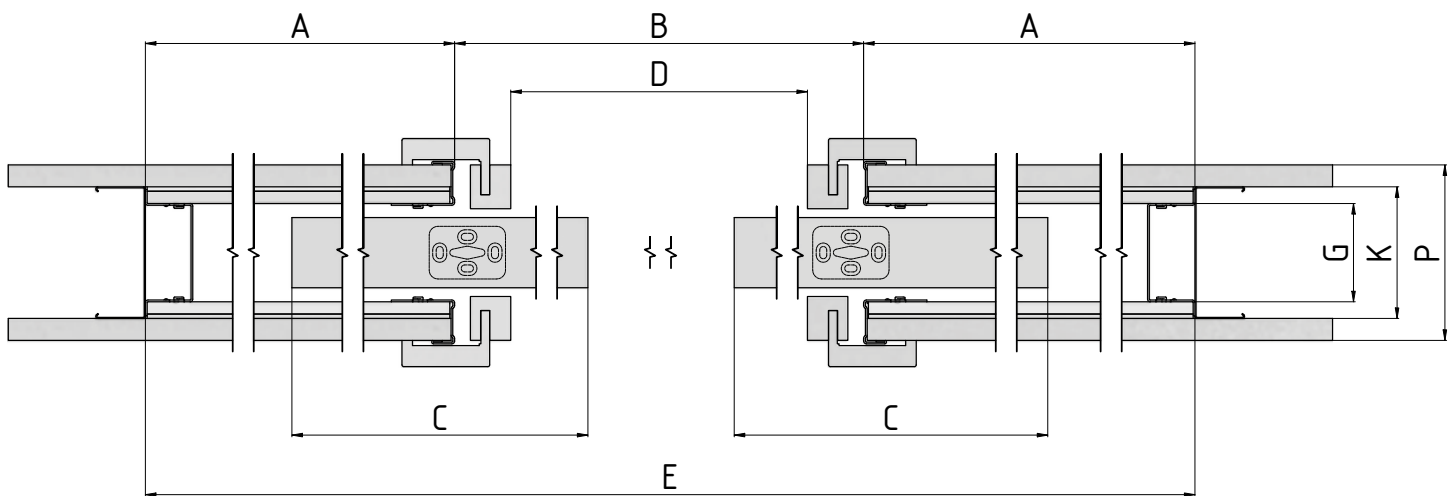
L – standard height of door leaf

P – Minimum thickness of finished partition

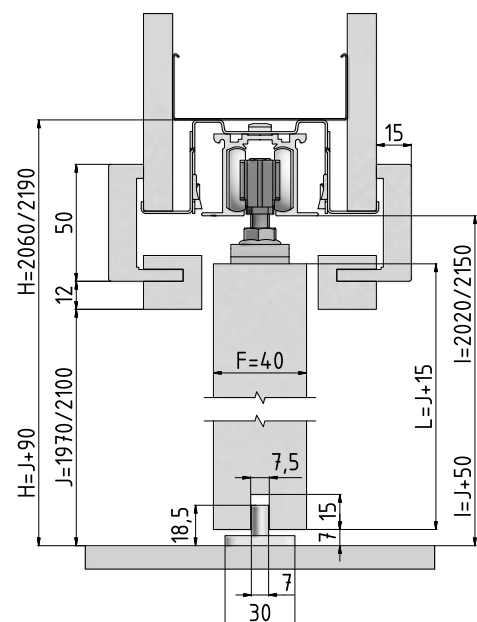
DATA NECESSARY FOR ORDERING PROFIKIT KOMFORT POCKET DOORFRAME:

- Clear passage dimensions: D × J
- Thickness of finished partition

- The construction opening corresponds to the pocket door frame dimensions — after its insertion into the construction opening, the opening must be adapted by sliding the CW or UF profiles towards the pocket door frame. The pocket door-frame cannot bear a load.
- The external thickness of construction casing K is 10 mm = thickness of completed partition P = 125 mm.
- Alternative thickness of pocket doorframe Ka 75 mm = thickness of completed partition Pa 100 mm — applies only to passage height 1970 mm.
- Clearance of the pocket for the completed partition thickness
P = 125 mm is G = 79 mm.
- Clearance of the pocket for the completed partition thickness
Pa = 100 mm is Ga = 54 mm.



Horizontal cross-section of PROFIKIT KOMFORT pocket doorframe with a wooden door leaf 40 mm thick.



Vertical cross-section of PROFIKIT KOMFORT frame with wooden door leaf 40 mm thick.

Accessories for pocket doorframes

PROFIKIT KOMFORT

All accessories and joining material included.

INCLUDED IN THE PACKAGE

Set of travelling mechanisms

1 rail add-on



4 door racks



2 guide pin



4 stops



4 carriages

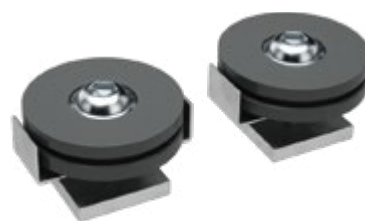


8 drywall hangers



ACCESSORIES FREE OF CHARGE

Synchronizing mechanism package



ACCESSORIES AT EXTRA CHARGE

Soft closing mechanism for wooden (≤ 60 kg) + activator

2 soft closing mechanisms

2 activators



Soft closing mechanism for glass door (60–85 kg) + activator

2 soft closing mechanisms

2 activators



Soft closing mechanism for glass door (85–120 kg) + activator

2 soft closing mechanisms

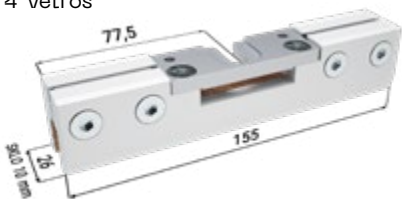
2 activators



- To damp both sides, two single-sided damping systems must be used.

Fixtures kit for the Vetro 22 glass door leaf with sliding guide

4 Vetros



DATA NECESSARY FOR ORDERING SOFT CLOSING MECHANISM FOR PROFIKIT KOMFORT POCKET DOORFRAME

- Net passage dimensions of pocket doorframe
- Weight of door leaf

Pocket doorframe

AKTIVE II STANDARD / KOMFORT

AKTIVE II STANDARD pocket doorframe



MASONRY



DRYWALL



BENCHMARK



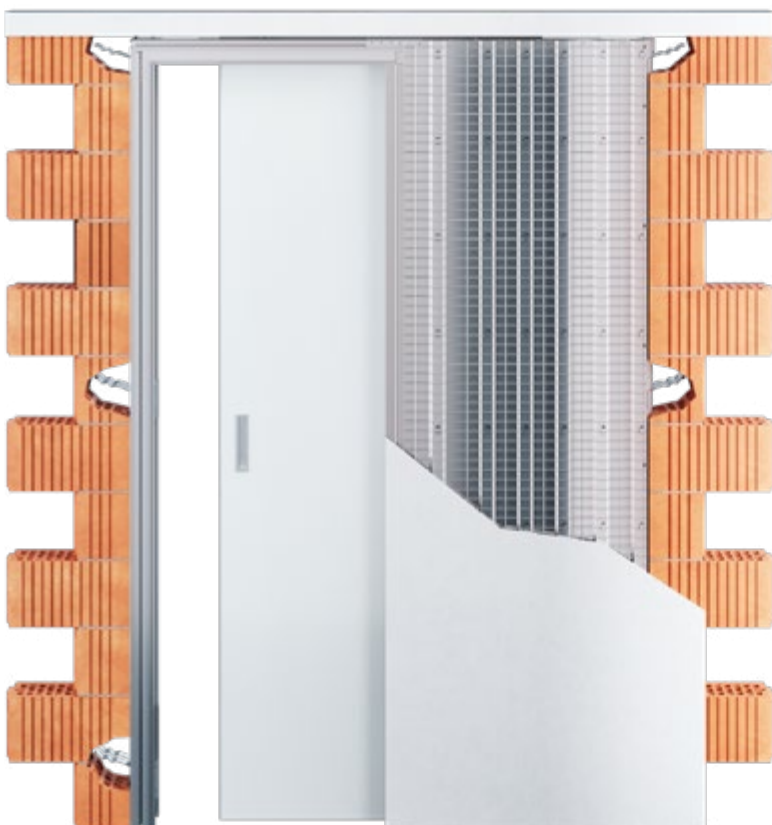
Pocket doorframe AKTIVE II STANDARD

AKTIVE II STANDARD pocket doorframe



This model is a welded construction pocket for slide-in single-leaf doors entirely without mounting panel doorframes – unlined pocket doorframe (passage around the doors is not limited by anything). An unlined pocket doorframe for single-leaf sliding doors that perfectly respects the clean, modern lines of the wall.

- For final partition thickness 125 and 150 mm
- Optional custom dimensions to 2700 mm tall.
- Used for drywall or masonry
- For masonry partitions, the hole must be provided with a lintel – the pocket doorframe cannot bear a load.
- For wooden, all-glass, MASTER and IDEA doors
- Hanging the door leaf requires ordering an installation package for wooden or glass doors at extra charge
- Maximum weight per door leaf is 120 kg
- Very quiet travelling mechanism in a special aluminium slat
- Removable upper rail
- Adjustable front and rear stop
- Option to purchase a damping stop for gradual door closing
- A switch can be placed in the frame pocket
- Entire frame made of high-quality galvanized sheet metal and aluminium profile
- The pocket doorframes are designed for the AKTIV II range of concealed doorframes for revolving doors.
- In the basic version, visible surfaces are provided with an adhesive bridge, intended for painting over
- 10-year warranty
- For an additional fee, we apply coatings according to RAL, NCS and CREATIVE METALLIC swatch books



Dimensions of pocket doorframe

AKTIVE II STANDARD

All dimensions are in millimetres.

Maximum dimensions of door leaf (F) for K 100: 40.

Width of passage after installing pocket doorframe (B) = D

AKTIVE II STANDARD 1970 mm

Height of net passage after installation of mounting panels (J): 1970.

Total height of the pocket doorframe (H): 2033.

Standard height of wooden door leaf (L): 1962.

Standard height of glass door leaf (L): 1950.

Net passage min. (D × J)	Overall dimensions of pocket doorframe (E × H)	Width of sheet metal pocket (A)	Standard dimensions of wooden door leaf (C × L)	Standard dimensions of glass door leaf (C × L)	Dimensions of rough construction opening in drywall	Recommended dimensions for rough structural hole in masonry systems
600 × 1970	1321 × 2033	668	650 × 1962	650 × 1950	1321 × 2033	1361 × 2043
700 × 1970	1521 × 2033	768	750 × 1962	750 × 1950	1521 × 2033	1561 × 2043
800 × 1970	1721 × 2033	868	850 × 1962	850 × 1950	1721 × 2033	1761 × 2043
900 × 1970	1921 × 2033	968	950 × 1962	950 × 1950	1921 × 2033	1961 × 2043
1000 × 1970	2121 × 2033	1068	1050 × 1962	1050 × 1950	2121 × 2033	2161 × 2043
1100 × 1970	2321 × 2033	1168	1150 × 1962	1150 × 1950	2321 × 2033	2361 × 2043
1200 × 1970	2521 × 2033	1268	1250 × 1962	1250 × 1950	2521 × 2033	2561 × 2043

AKTIVE II STANDARD 2100 mm

Height of net passage after installation of mounting panels (J): 2100.

Total height of the pocket doorframe (H): 2163.

Standard height of wooden door leaf (L): 2092.

Standard height of glass door leaf (L): 2080.

Net passage min. (D × J)	Overall dimensions of pocket doorframe (E × H)	Width of sheet metal pocket (A)	Standard dimensions of wooden door leaf (C × L)	Standard dimensions of glass door leaf (C × L)	Dimensions of rough construction opening in drywall	Recommended dimensions for rough structural hole in masonry systems
600 × 2100	1321 × 2163	668	650 × 2092	650 × 2080	1321 × 2163	1361 × 2173
700 × 2100	1521 × 2163	768	750 × 2092	750 × 2080	1521 × 2163	1561 × 2173
800 × 2100	1721 × 2163	868	850 × 2092	850 × 2080	1721 × 2163	1761 × 2173
900 × 2100	1921 × 2163	968	950 × 2092	950 × 2080	1921 × 2163	1961 × 2173
1000 × 2100	2121 × 2163	1068	1050 × 2092	1050 × 2080	2121 × 2163	2161 × 2173
1100 × 2100	2321 × 2163	1168	1150 × 2092	1150 × 2080	2321 × 2163	2361 × 2173
1200 × 2100	2521 × 2163	1268	1250 × 2092	1250 × 2080	2521 × 2163	2561 × 2173

A – width of sheet metal pocket

B – width of passage after installation of pocket doorframe

C – standard width of door leaf

D – width of net passage after installation of mounting panels

E – total width of pocket doorframe

F – maximum thickness of door leaf

G – internal dimensions of frame

H – total height of pocket doorframe

I – floor–rail height (verification of positioning on the finished floor)

J – height of net passage after installation of mounting panels

K – external dimensions of pocket doorframe

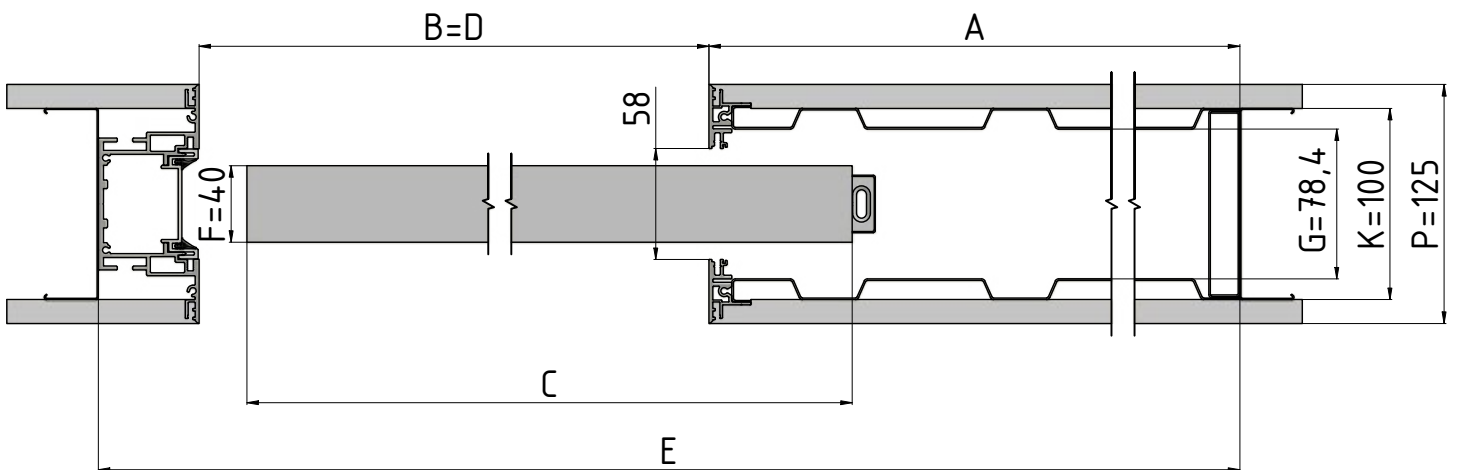
L – standard height of door leaf

P – Minimum thickness of finished partition

DATA NECESSARY FOR ORDERING AKTIVE II STANDARD POCKET DOORFRAME

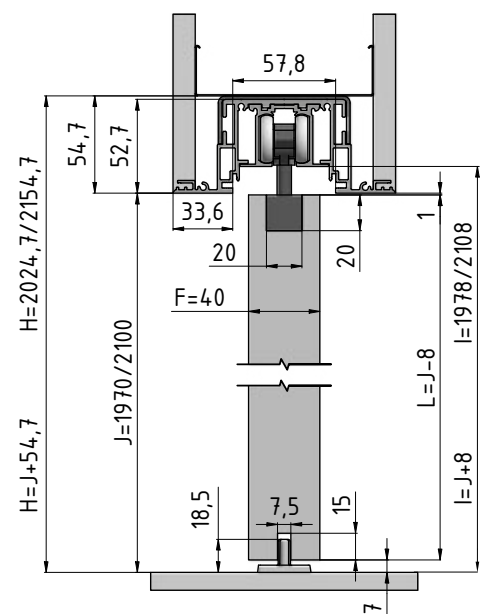
- Clear passage dimensions: D × J
- Partition type: Drywall × masonry
- Door manufacturer: JAP, SAPELI, other manufacturer
- Wall thickness: 125 or 150 mm

- Outer thickness (K) of the AKTIVE II pocket doorframe is 100 mm = finished partition (P) is 125 mm.
- The hole must be provided with a lintel — the pocket door-frame cannot bear a load.
- Standard net passage height is 1970 mm, 1985 mm and 2115 mm.
- Custom dimensions 1975 mm to 2700 mm.
- For hanging the door leaf, we recommend using the fixture contained in the installation package for wooden or glass doors at extra charge.



Horizontal cross-section of the AKTIVE II STANDARD pocket doorframe with a wooden door leaf 40 mm thick.

Vertical cross-section of AKTIVE II STANDARD pocket door frame with a wooden door leaf of thickness 40 mm



Accessories for pocket doorframes

AKTIVE II STANDARD

All accessories are supplied including nuts, bolts and seals.

ACCESSORIES AT EXTRA CHARGE

Installation package for wooden door

1 guide pin



1 end cap



2 aluminium coffins



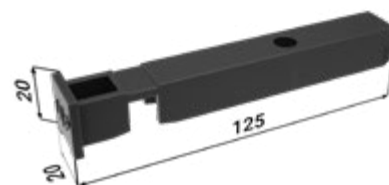
2 stops



2 carriages



2 plastic coffins



ACCESSORIES AT EXTRA CHARGE

Installation package for glass door

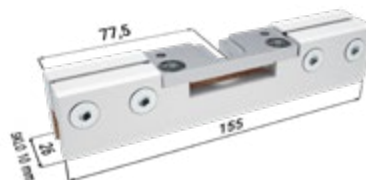
2 spacer profiles



1 end cap



2 Vetro 22



1 sliding guide with brushes



2 stops



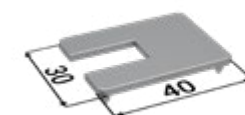
2 carriages



2 Vetro 22 covering profiles



2 Vetro 22 covers



NECESSARY INFORMATION FOR ORDERING INSTALLATION PACKAGE FOR Aktive II STANDARD POCKET DOORFRAME

- Clear passage dimensions of pocket doorframe

ACCESSORIES AT EXTRA CHARGE

Soft closing mechanism for wooden (≤ 60 kg) + activator

1 soft closing mechanism

1 activators



Soft closing mechanism for glass door (60–85 kg) + activator

1 soft closing mechanism

1 activators



Soft closing mechanism for glass door (85–120 kg) + activator

1 soft closing mechanism

1 activators



- To damp both sides, two single-sided damping systems must be used.

DATA NECESSARY FOR ORDERING QUIET STOP FOR ACTIVE II STANDARD POCKET DOORFRAME

- Doors: wooden x glass _____
- Clear passage dimensions of pocket doorframe
- Weight of door leaf

AKTIVE II STANDARD pocket doorframe fitted with a wooden door leaf



AKTIVE II STANDARD pocket doorframe fitted with an IDEALINE door



AKTIVE II STANDARD pocket doorframe fitted with a IDEA door



AKTIVE II STANDARD pocket doorframe fitted with a MASTER door



AKTIVE II STANDARD pocket doorframe fitted with an all-glass door leaf



Pocket doorframe AKTIVE II KOMFORT

AKTIVE II KOMFORT pocket doorframe



This model is a set of two welded pockets connected with a guide moulding. Each pocket is intended for one single-leaf door that slides out against itself.

- For final partition thickness 125 and 150 mm
- Movement of door leaves is synchronized – Synchronized track for AKTIVE II KOMFORT included in price.
- This model of pocket doorframe has no mounting panel doorframe at all – unlined pocket doorframe (nothing limits the passage around the door)
- Optional custom dimensions to 2700 mm tall
- Used for drywall or masonry
- For masonry partitions, the hole must be provided with a lintel – the pocket doorframe cannot bear a load.
- For wooden, all-glass, MASTER and IDEA doors
- Hanging the door leaf requires ordering an installation package for wooden or glass doors at extra charge
- Maximum weight per door leaf is 120 kg
- Very quiet travelling mechanism in a special aluminium slat
- Removable upper rail
- Adjustable front and rear stop
- Option to purchase a damping stop for gradual door closing
- A switch can be placed in the frame pocket
- Entire frame made of high-quality galvanized sheet metal and aluminium profile
- The pocket doorframes are designed for the AKTIV II range of concealed doorframes for revolving doors.
- 10-year warranty
- In the basic version, the visible surfaces have an adhesive bridge, intended for painting over
- For an additional fee, we apply coatings according to RAL, NCS and CREATIVE METALLIC swatch books
- A synchronizing mechanism cannot be used with all-glass doors



Dimensions of pocket doorframe

AKTIVE II KOMFORT

All dimensions are in millimetres.

Maximum dimensions of door leaf (F) for K 100: 40.

Width of passage after installing pocket doorframe (B) = D

AKTIVE II KOMFORT 1970 mm

Height of net passage after installation of mounting panels (J): 1970.

Total height of the pocket doorframe (H): 2033.

Standard height of wooden door leaf (L): 1962.

Standard height of glass door leaf (L): 1950.

Net passage min. (D × J)	Overall dimensions of pocket doorframe (E × H)	Width of sheet metal pocket (A)	Standard dimensions of wooden door leaf (C × L)	Standard dimensions of glass door leaf (C × L)	Dimensions of rough construction opening in drywall	Recommended dimensions for rough structural hole in masonry systems
1250 × 1970	2586 × 2033	668 × 2	(650 × 2) × 1962	(650 × 2) × 1950	2586 × 2033	2626 × 2043
1450 × 1970	2986 × 2033	768 × 2	(750 × 2) × 1962	(750 × 2) × 1950	2986 × 2033	3026 × 2043
1650 × 1970	3386 × 2033	868 × 2	(850 × 2) × 1962	(850 × 2) × 1950	3386 × 2033	3426 × 2043
1850 × 1970	3786 × 2033	968 × 2	(950 × 2) × 1962	(950 × 2) × 1950	3786 × 2033	3826 × 2043
2050 × 1970	4186 × 2033	1068 × 2	(1050 × 2) × 1962	(1050 × 2) × 1950	4186 × 2033	4226 × 2043
2250 × 1970	4586 × 2033	1168 × 2	(1150 × 2) × 1962	(1150 × 2) × 1950	4586 × 2033	4626 × 2043
2450 × 1970	4986 × 2033	1268 × 2	(1250 × 2) × 1962	(1250 × 2) × 1950	4986 × 2033	5026 × 2043

AKTIVE II KOMFORT 2100 mm

Height of net passage after installation of mounting panels (J): 2100.

Total height of the pocket doorframe (H): 2163.

Standard height of wooden door leaf (L): 2092.

Standard height of glass door leaf (L): 2080.

Net passage min. (D × J)	Overall dimensions of pocket doorframe (E × H)	Width of sheet metal pocket (A)	Standard dimensions of wooden door leaf (C × L)	Standard dimensions of glass door leaf (C × L)	Dimensions of rough construction opening in drywall	Recommended dimensions for rough structural hole in masonry systems
1250 × 2100	2586 × 2163	668 × 2	(650 × 2) × 2092	(650 × 2) × 2080	2586 × 2163	2626 × 2173
1450 × 2100	2986 × 2163	768 × 2	(750 × 2) × 2092	(750 × 2) × 2080	2986 × 2163	3026 × 2173
1650 × 2100	3386 × 2163	868 × 2	(850 × 2) × 2092	(850 × 2) × 2080	3386 × 2163	3426 × 2173
1850 × 2100	3786 × 2163	968 × 2	(950 × 2) × 2092	(950 × 2) × 2080	3786 × 2163	3826 × 2173
2050 × 2100	4186 × 2163	1068 × 2	(1050 × 2) × 2092	(1050 × 2) × 2080	4186 × 2163	4226 × 2173
2250 × 2100	4586 × 2163	1168 × 2	(1150 × 2) × 2092	(1150 × 2) × 2080	4586 × 2163	4626 × 2173
2450 × 2100	4986 × 2163	1268 × 2	(1250 × 2) × 2092	(1250 × 2) × 2080	4986 × 2163	5026 × 2173

A – width of sheet metal pocket

B – width of passage after installation of pocket doorframe

C – standard width of door leaf

D – width of net passage after installation of mounting panels

E – total width of pocket doorframe

F – maximum thickness of door leaf

G – internal dimensions of frame

H – total height of pocket doorframe

I – floor–rail height (verification of positioning on the finished floor)

J – height of net passage after installation of mounting panels

K – external dimensions of pocket doorframe

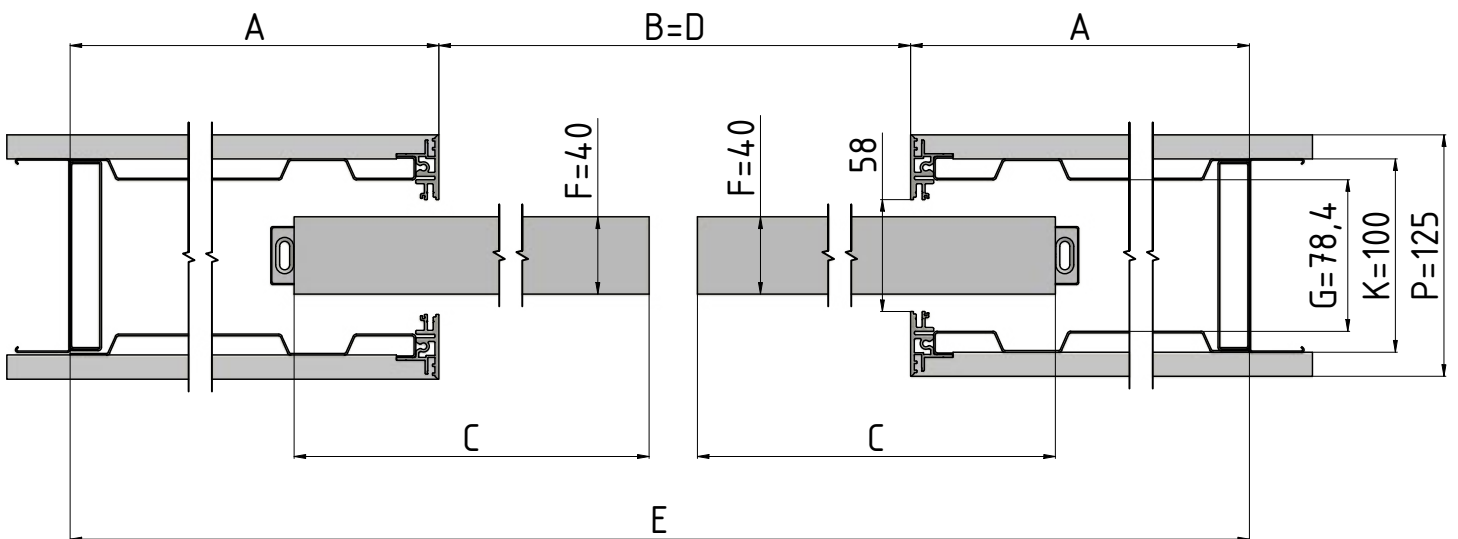
L – standard height of door leaf

P – Minimum thickness of finished partition

DATA NECESSARY FOR ORDERING AKTIVE II KOMFORT POCKET DOORFRAME

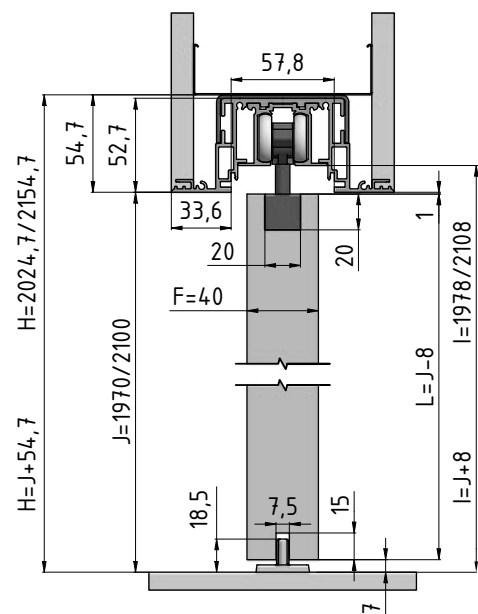
- Clear passage dimensions: D × J
- Partition type: Drywall × masonry
- Door manufacturer: JAP, SAPELI, other manufacturer
- Wall thickness: 125 or 150 mm

- Outer thickness (K) of the AKTIVE pocket doorframe is 100 mm = finished partition (P) is 125 mm.
- The hole must be provided with a lintel — the pocket doorframe cannot bear a load.
- Standard net passage height is 1970 mm, 1985 mm and 2115 mm.
- Custom dimensions 1975 mm to 2700 mm.



Horizontal cross-section of AKTIVE II KOMFORT pocket doorframe with a wooden door leaf 40 mm thick.

Vertical cross-section of AKTIVE II KOMFORT pocket doorframe with a wooden door leaf 40 mm thick.



Accessories for pocket doorframes

AKTIVE II KOMFORT

All accessories are supplied including nuts, bolts and seals.

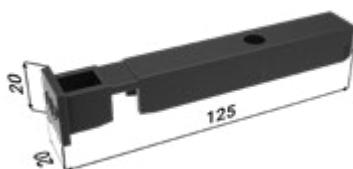
ACCESSORIES AT EXTRA CHARGE

Installation package for wooden door

2 guide pins



4 plastic coffins



4 aluminium coffins



4 stops



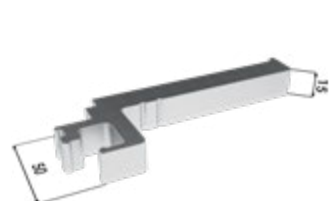
4 carriages



ACCESSORIES AT EXTRA CHARGE

Installation package for glass door

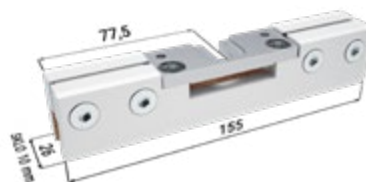
4 spacer profiles



2 sliding guides with brushes



4 Vetro 22



4 Vetro 22 covers



4 stops



4 carriages



4 Vetro 22 covering profiles



DATA NECESSARY FOR ORDERING INSTALLATION PACKAGE FOR AKTIVE II KOMFORT POCKET DOORFRAME

- Clear passage dimensions of pocket doorframe

ACCESSORIES FREE OF CHARGE

Synchronizing mechanism package



ACCESSORIES AT EXTRA CHARGE

Soft closing mechanism for wooden (≤ 60 kg) + activator

2 soft closing mechanisms

2 activators



Soft closing mechanism for glass door (60–85 kg) + activator

2 soft closing mechanisms

2 activators



Soft closing mechanism for glass door (85–120 kg) + activator

2 soft closing mechanisms

2 activators



- To damp both sides, two single-sided damping systems must be used.

DATA NECESSARY FOR ORDERING QUIET STOP FOR AKTIVE II KOMFORT POCKET DOORFRAME

- Doors: wooden x glass
- Clear passage dimensions of pocket doorframe
- Weight of door leaf

Pocket doorframe

EMOTIVE II STANDARD / KOMFORT

EMOTIVE II STANDARD pocket doorframe



EMOTIVE II STANDARD

MASONRY



DRYWALL



BENCHMARK



Protective frame



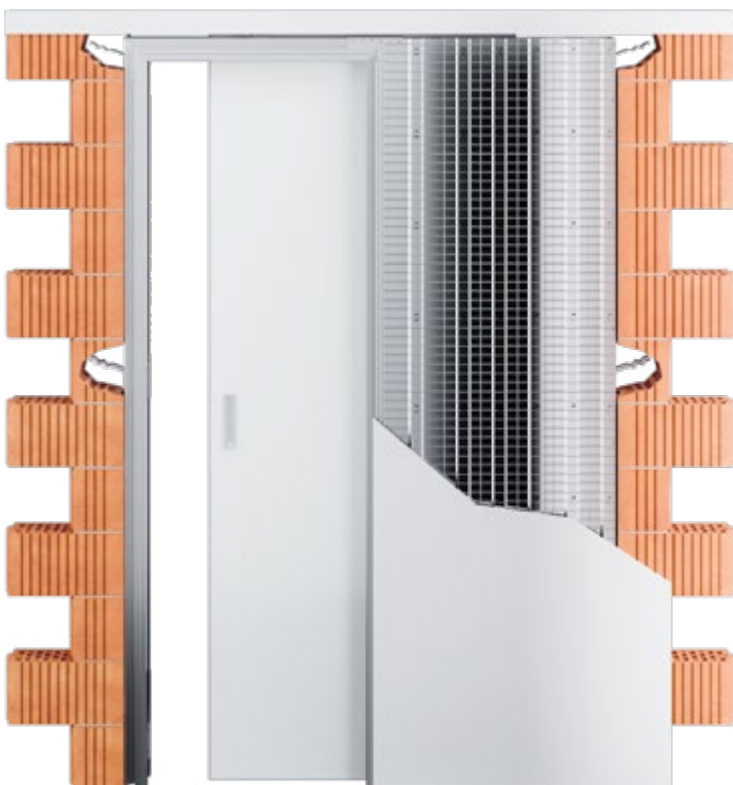
Pocket doorframe EMOTIVE II STANDARD

EMOTIVE II STANDARD pocket doorframe



The passage around the door is edged with an aluminium frame for both design and protection. Clean, modern lines for unlined pocket doorframes. The pocket doorframes are designed for the EMOTIVE range of concealed doorframes for revolving doors.

- Unlined, welded pocket doorframe for sliding single-leaf doors, when no doorframe is used, but a decorative frame 17 mm wide
- Entire frame made of high-quality galvanized sheet metal and aluminium profile
- Optional custom dimensions to 2700 mm tall
- Used for drywall or masonry
- For masonry partitions, the hole must be provided with a lintel — the pocket doorframe cannot bear a load.
- For wooden, all-glass, MASTER and IDEA doors
- Hanging the door leaf requires ordering an installation package for wooden or glass doors at extra charge
- Maximum weight per door leaf is 120 kg
- For final partition thickness 125 and 150 mm
- High-quality, very quiet travelling mechanism in a special aluminium slat
- Removable upper rail
- Adjustable front and rear stop
- Option to purchase a damping stop for gradual door closing
- A switch can be placed in the frame pocket
- In the basic version, the visible surfaces have an adhesive bridge, intended for painting over
- 10-year warranty
- For an additional fee, we apply coatings according to RAL, NCS and CREATIVE METALLIC swatch books



Dimensions of pocket doorframe

EMOTIVE II STANDARD

All dimensions are in millimetres.

Maximum dimensions of door leaf (F) for K 100: 40.

Width of passage after installing pocket doorframe (B) = D

EMOTIVE II STANDARD 1970 mm

Height of net passage after installation of mounting panels (J): 1970.

Total height of the pocket doorframe (H): 2033.

Standard height of wooden door leaf (L): 1962.

Standard height of glass door leaf (L): 1950.

Net passage min. (D × J)	Overall dimensions of pocket doorframe (E × H)	Width of sheet metal pocket (A)	Standard dimensions of wooden door leaf (C × L)	Standard dimensions of glass door leaf (C × L)	Dimensions of rough construction opening in drywall	Recommended dimensions for rough structural hole in masonry systems
600 × 1970	1321 × 2033	668	650 × 1962	650 × 1950	1321 × 2033	1361 × 2043
700 × 1970	1521 × 2033	768	750 × 1962	750 × 1950	1521 × 2033	1561 × 2043
800 × 1970	1721 × 2033	868	850 × 1962	850 × 1950	1721 × 2033	1761 × 2043
900 × 1970	1921 × 2033	968	950 × 1962	950 × 1950	1921 × 2033	1961 × 2043
1000 × 1970	2121 × 2033	1068	1050 × 1962	1050 × 1950	2121 × 2033	2161 × 2043
1100 × 1970	2321 × 2033	1168	1150 × 1962	1150 × 1950	2321 × 2033	2361 × 2043
1200 × 1970	2521 × 2033	1268	1250 × 1962	1250 × 1950	2521 × 2033	2561 × 2043

EMOTIVE II STANDARD 2100 mm

Height of net passage after installation of mounting panels (J): 2100.

Total height of the pocket doorframe (H): 2163.

Standard height of wooden door leaf (L): 2092.

Standard height of glass door leaf (L): 2080.

Net passage min. (D × J)	Overall dimensions of pocket doorframe (E × H)	Width of sheet metal pocket (A)	Standard dimensions of wooden door leaf (C × L)	Standard dimensions of glass door leaf (C × L)	Dimensions of rough construction opening in drywall	Recommended dimensions for rough structural hole in masonry systems
600 × 2100	1321 × 2163	668	650 × 2092	650 × 2080	1321 × 2163	1361 × 2173
700 × 2100	1521 × 2163	768	750 × 2092	750 × 2080	1521 × 2163	1561 × 2173
800 × 2100	1721 × 2163	868	850 × 2092	850 × 2080	1721 × 2163	1761 × 2173
900 × 2100	1921 × 2163	968	950 × 2092	950 × 2080	1921 × 2163	1961 × 2173
1000 × 2100	2121 × 2163	1068	1050 × 2092	1050 × 2080	2121 × 2163	2161 × 2173
1100 × 2100	2321 × 2163	1168	1150 × 2092	1150 × 2080	2321 × 2163	2361 × 2173
1200 × 2100	2521 × 2163	1268	1250 × 2092	1250 × 2080	2521 × 2163	2561 × 2173

A – width of sheet metal pocket

B – width of passage after installation of pocket doorframe

C – standard width of door leaf

D – width of net passage after installation of mounting panels

E – total width of pocket doorframe

F – maximum thickness of door leaf

G – internal dimensions of frame

H – total height of pocket doorframe

I – floor–rail height (verification of positioning on the finished floor)

J – height of net passage after installation of mounting panels

K – external dimensions of pocket doorframe

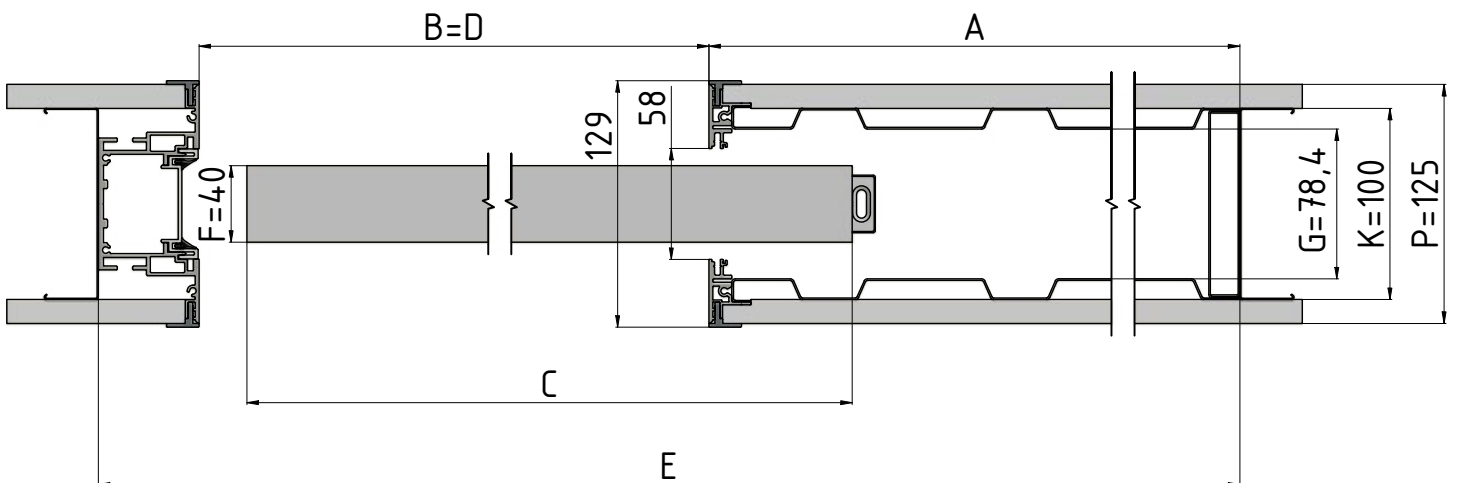
L – standard height of door leaf

P – Minimum thickness of finished partition

DATA NECESSARY FOR ORDERING EMOTIVE II STANDARD POCKET DOORFRAME

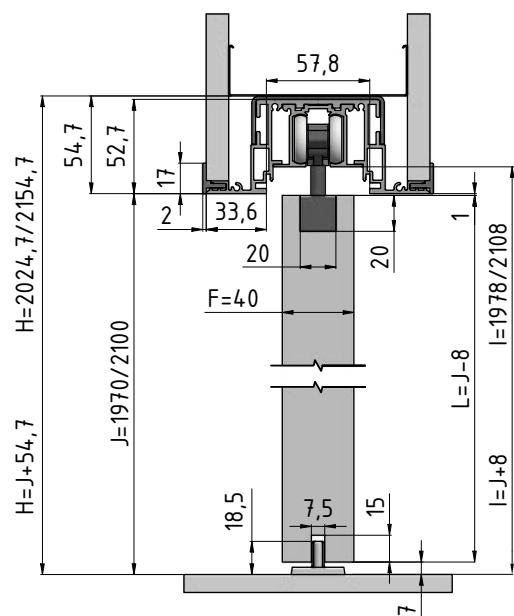
- Clear passage dimensions: D × J
- Partition type: Drywall × masonry
- Door manufacturer: JAP, SAPELI, other manufacturer
- Wall thickness: 125 or 150 mm

- Recommended dimensions for rough construction opening for drywall systems match the dimensions of pocket doorframes E × H with the option of moving the raster from CW or UA profiles — abutment of the profile to the pocket.
- Outer thickness (K) of the EMOTIVE pocket doorframe is 100 mm = finished partition (P) is 125 mm.
- The hole must be provided with a lintel — the pocket doorframe cannot bear a load.
- Standard net passage height is 1970 mm, 1985 mm, 2100 mm and 2115 mm.
- Custom dimensions 1975 mm to 2700 mm.



Horizontal cross-section of EMOTIVE II STANDARD pocket doorframe with a wooden door leaf 40 mm thick.

Vertical cross-section of EMOTIVE II STANDARD pocket doorframe with a wooden door leaf 40 mm thick.



Accessories for pocket doorframes

EMOTIVE II STANDARD

All accessories are supplied including nuts, bolts and seals.

ACCESSORIES AT EXTRA CHARGE

Installation package for wooden door

1 guide pin



1 end cap



2 aluminium coffins



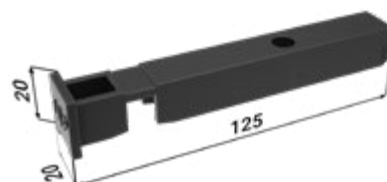
2 stops



2 carriages



2 plastic coffins



ACCESSORIES AT EXTRA CHARGE

Installation package for glass door

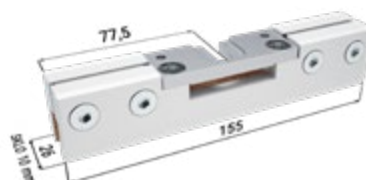
2 spacer profiles



1 end cap



2 Vetro 22



1 sliding guide with brushes



2 stops



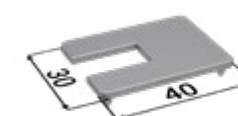
2 carriages



2 Vetro 22 covering profiles



2 Vetro 22 covers



DATA NECESSARY FOR ORDERING INSTALLATION PACKAGE FOR EMOTIVE II STANDARD POCKET DOORFRAME

- Clear passage dimensions of pocket doorframe

ACCESSORIES AT EXTRA CHARGE

Soft closing mechanism for wooden (≤ 60 kg) + activator

1 soft closing mechanism

1 activators



Soft closing mechanism for glass door (60–85 kg) + activator

1 soft closing mechanism

1 activators



Soft closing mechanism for glass door (85–120 kg) + activator

1 soft closing mechanism

1 activators



- To damp both sides, two single-sided damping systems must be used.

DATA NECESSARY FOR ORDERING INSTALLATION PACKAGE FOR EMOTIVE II STANDARD POCKET DOORFRAME

- Doors: wooden x glass
- Clear passage dimensions of pocket doorframe
- Weight of door leaf

EMOTIVE II STANDARD pocket doorframe fitted with a wooden door leaf



EMOTIVE II STANDARD pocket doorframe fitted with an IDEALINE door



EMOTIVE II STANDARD pocket doorframe fitted with an IDEA door



EMOTIVE II STANDARD pocket doorframe fitted with a MASTER door



EMOTIVE II STANDARD pocket doorframe fitted with an all-glass door leaf



Pocket doorframe EMOTIVE II KOMFORT

EMOTIVE II KOMFORT pocket doorframe



Set of two unlined pocket doorframes joined together by a guide rail. Each pocket doorframe is intended for a single-leaf door, with the doors sliding out toward each other, and the movement of the doors may be synchronized. Synchronous travelling mechanism is included in the price of EMOTIVE II KOMFORT

- No doorframe is used, but a decorative frame 17 mm wide
- The passage around the door is edged with an aluminium frame for both design and protection
- Clean, modern lines for unlined pocket doorframes
- The pocket doorframes are designed for the EMOTIVE range of concealed doorframes for revolving doors
- Optional custom dimensions to 2700 mm tall
- Used for drywall or masonry
- For wooden, all-glass, MASTER and IDEA doors
- Hanging the door leaf requires ordering an installation package for wooden or glass doors at extra charge
- Maximum weight per door leaf is 120 kg
- Entire frame made of high-quality galvanized sheet metal and aluminium profile
- For final partition thickness 125 and 150 mm
- For masonry partitions, the hole must be provided with a lintel — the pocket doorframe cannot bear a load.
- High-quality, very quiet travelling mechanism in a special aluminium slat
- Removable upper rail
- Adjustable front and rear stop
- Option to purchase a damping stop for gradual door closing
- A switch can be placed in the frame pocket
- 10-year warranty
- For an additional fee, we apply coatings according to RAL, NCS and CREATIVE METALLIC swatch books



Dimensions of pocket doorframe

EMOTIVE II KOMFORT

All dimensions are in millimetres.

Maximum dimensions of door leaf (F) for K 100: 40.

Width of passage after installing pocket doorframe (B) = D

EMOTIVE II KOMFORT 1970 mm

Height of net passage after installation of mounting panels (J): 1970.

Total height of the pocket doorframe (H): 2033.

Standard height of wooden door leaf (L): 1962.

Standard height of glass door leaf (L): 1950.

Net passage min. (D × J)	Overall dimensions of pocket doorframe (E × H)	Width of sheet metal pocket (A)	Standard dimensions of wooden door leaf (C × L)	Standard dimensions of glass door leaf (C × L)	Dimensions of rough construction opening in drywall	Recommended dimensions for rough structural hole in masonry systems
1250 × 1970	2586 × 2033	668 × 2	(650 × 2) × 1962	(650 × 2) × 1950	2586 × 2033	2626 × 2043
1450 × 1970	2986 × 2033	768 × 2	(750 × 2) × 1962	(750 × 2) × 1950	2986 × 2033	3026 × 2043
1650 × 1970	3386 × 2033	868 × 2	(850 × 2) × 1962	(850 × 2) × 1950	3386 × 2033	3426 × 2043
1850 × 1970	3786 × 2033	968 × 2	(950 × 2) × 1962	(950 × 2) × 1950	3786 × 2033	3826 × 2043
2050 × 1970	4186 × 2033	1068 × 2	(1050 × 2) × 1962	(1050 × 2) × 1950	4186 × 2033	4226 × 2043
2250 × 1970	4586 × 2033	1168 × 2	(1150 × 2) × 1962	(1150 × 2) × 1950	4586 × 2033	4626 × 2043
2450 × 1970	4986 × 2033	1268 × 2	(1250 × 2) × 1962	(1250 × 2) × 1950	4986 × 2033	5026 × 2043

EMOTIVE II KOMFORT 2100 mm

Height of net passage after installation of mounting panels (J): 2100.

Total height of the pocket doorframe (H): 2163.

Standard height of wooden door leaf (L): 2092.

Standard height of glass door leaf (L): 2080.

Net passage min. (D × J)	Overall dimensions of pocket doorframe (E × H)	Width of sheet metal pocket (A)	Standard dimensions of wooden door leaf (C × L)	Standard dimensions of glass door leaf (C × L)	Dimensions of rough construction opening in drywall	Recommended dimensions for rough structural hole in masonry systems
1250 × 2100	2586 × 2163	668 × 2	(650 × 2) × 2092	(650 × 2) × 2080	2586 × 2163	2626 × 2173
1450 × 2100	2986 × 2163	768 × 2	(750 × 2) × 2092	(750 × 2) × 2080	2986 × 2163	3026 × 2173
1650 × 2100	3386 × 2163	868 × 2	(850 × 2) × 2092	(850 × 2) × 2080	3386 × 2163	3426 × 2173
1850 × 2100	3786 × 2163	968 × 2	(950 × 2) × 2092	(950 × 2) × 2080	3786 × 2163	3826 × 2173
2050 × 2100	4186 × 2163	1068 × 2	(1050 × 2) × 2092	(1050 × 2) × 2080	4186 × 2163	4226 × 2173
2250 × 2100	4586 × 2163	1168 × 2	(1150 × 2) × 2092	(1150 × 2) × 2080	4586 × 2163	4626 × 2173
2450 × 2100	4986 × 2163	1268 × 2	(1250 × 2) × 2092	(1250 × 2) × 2080	4986 × 2163	5026 × 2173

A – width of sheet metal pocket

B – width of passage after installation of pocket doorframe

C – standard width of door leaf

D – width of net passage after installation of mounting panels

E – total width of pocket doorframe

F – maximum thickness of door leaf

G – internal dimensions of frame

H – total height of pocket doorframe

I – floor–rail height (verification of positioning on the finished floor)

J – height of net passage after installation of mounting panels

K – external dimensions of pocket doorframe

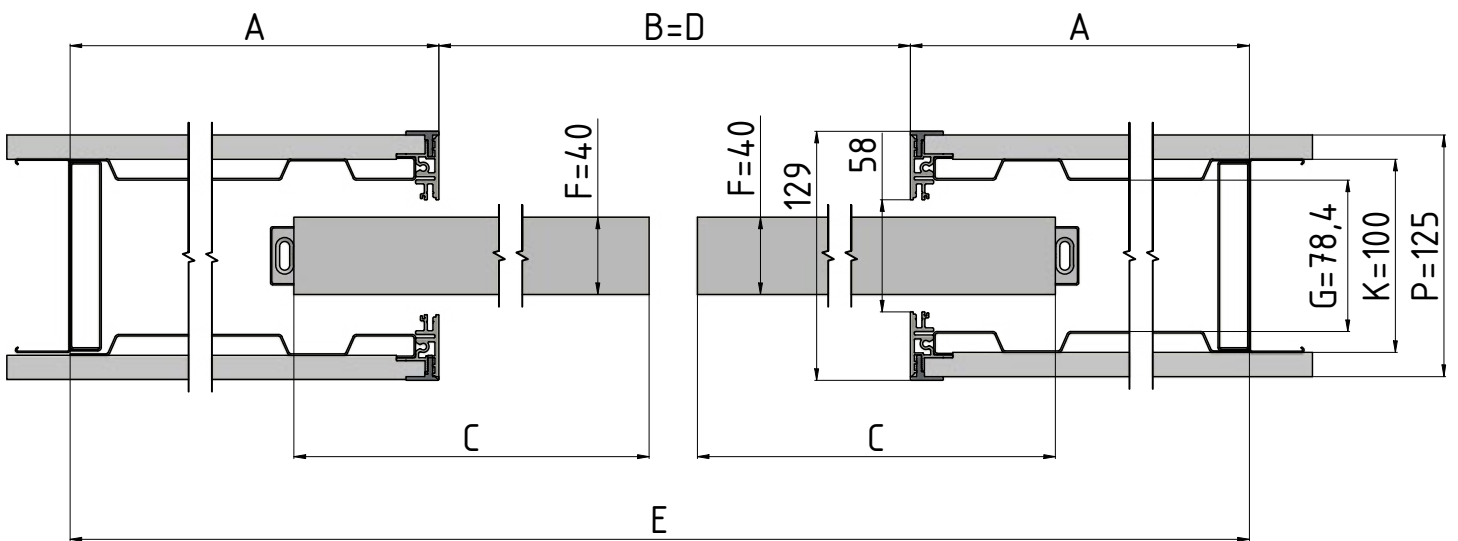
L – standard height of door leaf

P – Minimum thickness of finished partition

DATA NECESSARY FOR ORDERING EMOTIVE II POCKET DOORFRAME

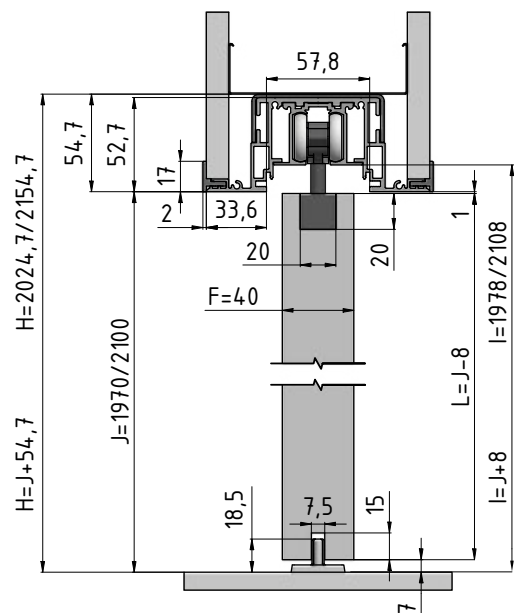
- Clear passage dimensions: D × J
- Partition type: Drywall × masonry
- Door manufacturer: JAP, SAPELI, other manufacturer
- Wall thickness: 125 or 150 mm

- Outer thickness (K) of the EMOTIVE II pocket doorframe is 100 mm = finished partition (P) is 125 mm.
- The hole must be provided with a lintel — the pocket doorframe cannot bear a load.
- Standard net passage height is 1970 mm, 1985 mm, 2100 mm and 2115 mm.
- Custom dimensions 1975 mm to 2700 mm.



Horizontal cross-section of EMOTIVE II KOMFORT pocket doorframe with a wooden door leaf 40 mm thick.

Vertical cross-section of EMOTIVE II KOMFORT frame with a wooden door leaf 40 mm thick.



Accessories for pocket doorframes

EMOTIVE II KOMFORT

All accessories are supplied including nuts, bolts and seals.

ACCESSORIES FREE OF CHARGE

Synchronizing mechanism package

All-glass door leaf without synchronizing mechanism.



ACCESSORIES AT EXTRA CHARGE

Installation package for wooden door

2 guide pins



4 plastic coffins



4 aluminium coffins



4 stops



4 carriages



ACCESSORIES AT EXTRA CHARGE

Installation package for glass door

4 spacer profiles

2 sliding guides with brushes

4 Vetro 22

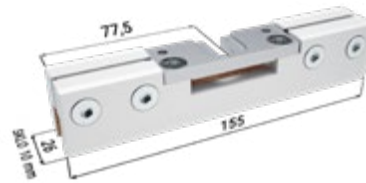
4 Vetro 22 covers



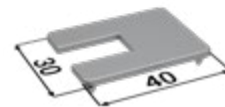
4 stops



4 carriages



4 Vetro 22 covering profiles



DATA NECESSARY FOR ORDERING INSTALLATION PACKAGE FOR EMOTIVE II KOMFORT POCKET DOORFRAME

- Clear passage dimensions of pocket doorframe

ACCESSORIES AT EXTRA CHARGE

Soft closing mechanism for wooden (≤ 60 kg) + activator

2 soft closing mechanisms

2 activators



Soft closing mechanism for glass door (60–85 kg) + activator

2 soft closing mechanisms

2 activators



Soft closing mechanism for glass door (85–120 kg) + activator

2 soft closing mechanisms

2 activators



- To damp both sides, two single-sided damping systems must be used.

DATA NECESSARY FOR ORDERING QUIET STOP FOR EMOTIVE II KOMFORT POCKET DOORFRAME

- Doors: wooden x glass
- Clear passage dimensions of pocket doorframe
- Weight of door leaf

Pocket doorframe

LATENTE STANDARD / KOMFORT

LATENTE STANDARD pocket doorframe



LATENTE STANDARD

Masonry



Drywall



Anchor plates



Detail of the screed at the frame mouth



Benchmark



A detail of the upper section of the standing leg



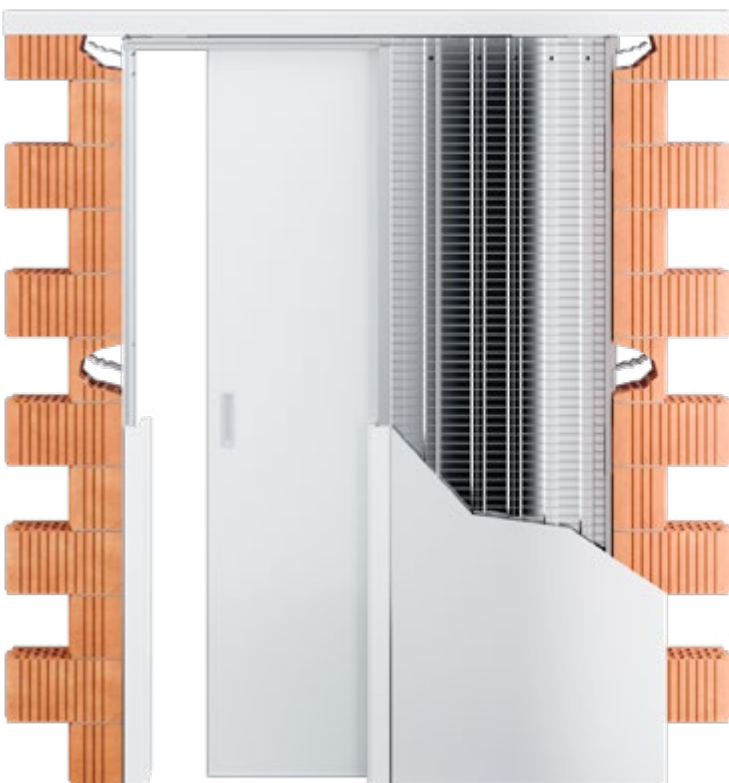
Pocket doorframe LATENTE STANDARD

LATENTE STANDARD pocket doorframe



Welded pocket doorframe for sliding single-leaf doors with option to install doorframes that are flush with the wall contour.

- For doorframes 15 mm thick.
- The pocket doorframes are designed for the LATENTE range of counter-doorframes for revolving doors
- Optional custom dimensions to 2700 mm tall
- Used for drywall or masonry
- Compatible with all makes of door
- For wooden, all-glass, MASTER doors
- Hanging the door leaf requires ordering an installation package for wooden or glass doors at extra charge
- Maximum weight per door leaf is 120 kg
- Entire frame made of high-quality galvanized sheet metal and aluminium profile
- For final partition thickness 125 and 150 mm
- For masonry partitions, the hole must be provided with a lintel — the pocket doorframe cannot bear a load.
- High-quality, very quiet travelling mechanism in a special aluminium slat
- Removable upper rail
- Adjustable front and rear stop
- A switch can be placed in the frame pocket
- 10-year warranty



Dimensions of pocket doorframe

LATENTE STANDARD

All dimensions are in millimetres.

Maximum dimensions of door leaf (F) for K 100: 68.

MOUNTING PANELS

50 mm + 12 mm half track + 3 mm wide shadow groove.

LATENTE STANDARD 1970 mm

Height of net passage after installation of mounting panels (J): 1970.

Total height of the pocket doorframe (H): 2053.

Standard height of wooden door leaf (L): 1985.

Net passage after mounting panels min. (D × J)	Overall dimensions of pocket doorframe (E × H)	Width of sheet metal pocket (A)	Width of passage after installation of pocket doorframe (B)	Net passage after installation of mounting panels min. (C × L)	Dimensions of rough construction opening in drywall	Recommended dimensions for rough structural hole in masonry systems
600 × 1970	1392 × 2053	690	680	650 × 1985	1392 × 2053	1432 × 2073
700 × 1970	1592 × 2053	790	780	750 × 1985	1592 × 2053	1632 × 2073
800 × 1970	1792 × 2053	890	880	850 × 1985	1792 × 2053	1832 × 2073
900 × 1970	1992 × 2053	990	980	950 × 1985	1992 × 2053	2032 × 2073
1000 × 1970	2192 × 2053	1090	1080	1050 × 1985	2192 × 2053	2232 × 2073
1100 × 1970	2392 × 2053	1190	1180	1150 × 1985	2392 × 2053	2432 × 2073
1200 × 1970	2592 × 2053	1290	1280	1250 × 1985	2592 × 2053	2632 × 2073

LATENTE STANDARD 2100 mm

Height of net passage after installation of mounting panels (J): 2100.

Total height of the pocket doorframe (H): 2183.

Standard height of wooden door leaf (L): 2115.

Net passage after mounting panels min. (D × J)	Overall dimensions of pocket doorframe (E × H)	Width of sheet metal pocket (A)	Width of passage after installation of pocket doorframe (B)	Net passage after installation of mounting panels min. (C × L)	Dimensions of rough construction opening in drywall	Recommended dimensions for rough structural hole in masonry systems
600 × 2100	1392 × 2183	690	680	650 × 2115	1392 × 2183	1432 × 2203
700 × 2100	1592 × 2183	790	780	750 × 2115	1592 × 2183	1632 × 2203
800 × 2100	1792 × 2183	890	880	850 × 2115	1792 × 2183	1832 × 2203
900 × 2100	1992 × 2183	990	980	950 × 2115	1992 × 2183	2032 × 2203
1000 × 2100	2192 × 2183	1090	1080	1050 × 2115	2192 × 2183	2232 × 2203
1100 × 2100	2392 × 2183	1190	1180	1150 × 2115	2392 × 2183	2432 × 2203
1200 × 2100	2592 × 2183	1290	1280	1250 × 2115	2592 × 2183	2632 × 2203

A – width of sheet metal pocket

B – width of passage after installation of pocket doorframe

C – standard width of door leaf

D – width of net passage after installation of mounting panels

E – total width of pocket doorframe

F – maximum thickness of door leaf

G – internal dimensions of frame

H – total height of pocket doorframe

I – floor–rail height (verification of positioning on the finished floor)

J – height of net passage after installation of mounting panels

K – external dimensions of pocket doorframe

L – standard height of door leaf

P – Minimum thickness of finished partition

MOUNTING PANELS

65 mm + Ø mm wide half-groove + 1 mm wide shadow groove

LATENTE STANDARD 1970 mm

Height of net passage after installation of mounting panels (J): 1970.

Total height of the pocket doorframe (H): 2054.

Standard height of wooden door leaf (L): 1985.

Net passage after mounting panels min. (D × J)	Overall dimensions of pocket doorframe (E × H)	Width of sheet metal pocket (A)	Width of passage after installation of pocket doorframe (B)	Net passage after installation of mounting panels min. (C × L)	Dimensions of rough construction opening in drywall	Recommended dimensions for rough structural hole in masonry systems
600 × 1970	1388 × 2054	690	676	650 × 1985	1388 × 2054	1428 × 2074
700 × 1970	1588 × 2054	790	776	750 × 1985	1588 × 2054	1628 × 2074
800 × 1970	1788 × 2054	890	876	850 × 1985	1788 × 2054	1828 × 2074
900 × 1970	1988 × 2054	990	976	950 × 1985	1988 × 2054	2028 × 2074
1000 × 1970	2188 × 2054	1090	1076	1050 × 1985	2188 × 2054	2228 × 2074
1100 × 1970	2388 × 2054	1190	1176	1150 × 1985	2388 × 2054	2428 × 2074
1200 × 1970	2588 × 2054	1290	1276	1250 × 1985	2588 × 2054	2628 × 2074

LATENTE STANDARD 2100 mm

Height of net passage after installation of mounting panels (J): 2100.

Total height of the pocket doorframe (H): 2184.

Standard height of wooden door leaf (L): 2115.

Net passage after mounting panels min. (D × J)	Overall dimensions of pocket doorframe (E × H)	Width of sheet metal pocket (A)	Width of passage after installation of pocket doorframe (B)	Net passage after installation of mounting panels min. (C × L)	Dimensions of rough construction opening in drywall	Recommended dimensions for rough structural hole in masonry systems
600 × 2100	1388 × 2184	690	676	650 × 2115	1388 × 2184	1428 × 2204
700 × 2100	1588 × 2184	790	776	750 × 2115	1588 × 2184	1628 × 2204
800 × 2100	1788 × 2184	890	876	850 × 2115	1788 × 2184	1828 × 2204
900 × 2100	1988 × 2184	990	976	950 × 2115	1988 × 2184	2028 × 2204
1000 × 2100	2188 × 2184	1090	1076	1050 × 2115	2188 × 2184	2228 × 2204
1100 × 2100	2388 × 2184	1190	1176	1150 × 2115	2388 × 2184	2428 × 2204
1200 × 2100	2588 × 2184	1290	1276	1250 × 2115	2588 × 2184	2628 × 2204

Pocket doorframe

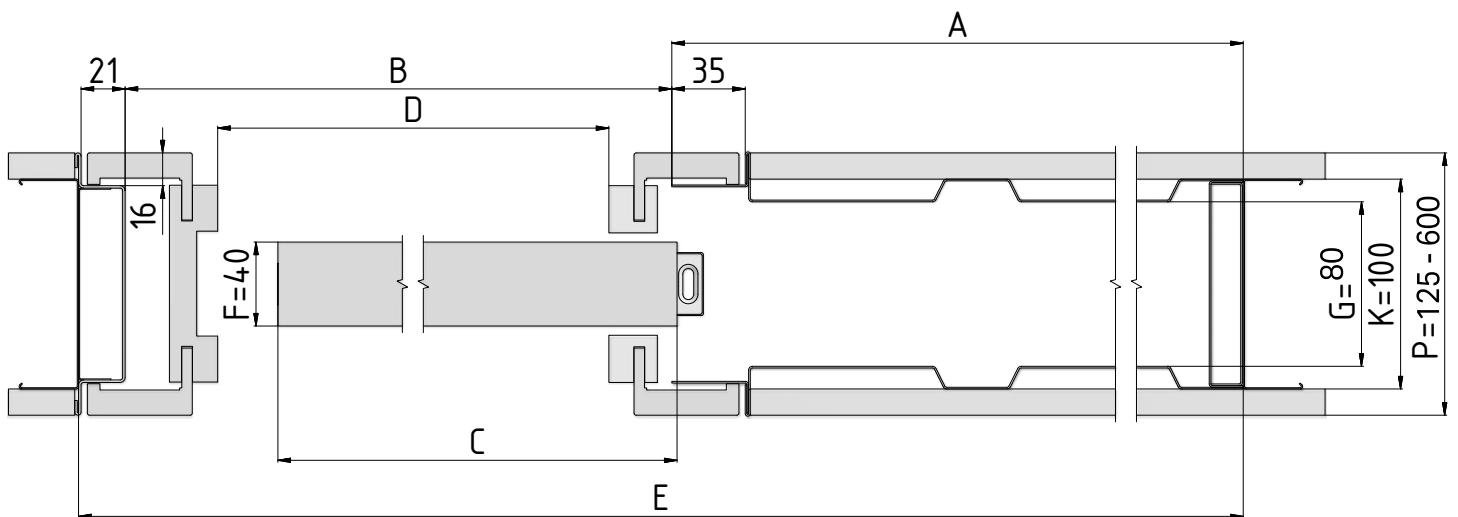
LATENTE STANDARD

DATA NECESSARY FOR ORDERING LATENTE STANDARD POCKET DOORFRAME

- Clear passage dimensions: D × J
- Partition type: Drywall × masonry
- Thickness of finished partition
- Mounting panel type: 50 + 12 + 3 mm or 65 + 0 + 1 mm
(mounting panel width + half track width + shadow groove width)

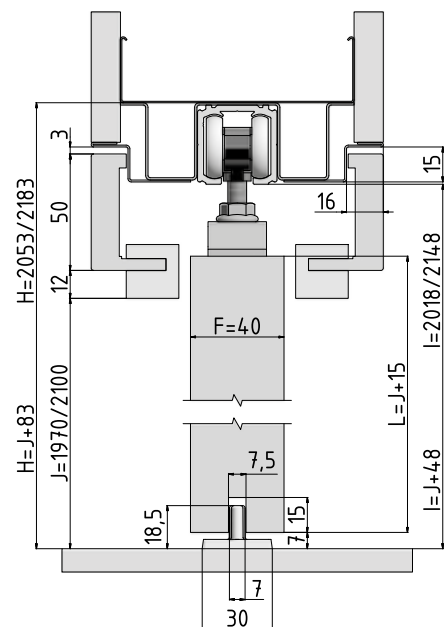


- Outer thickness (K) of the LATENTE STANDARD pocket door-frame is 100 mm = finished partition (P) is 125 mm.
- The hole must be provided with a lintel — the pocket door-frame cannot bear a load.
- Standard net passage height is 1970 mm, 1985 mm, 2100 mm and 2115 mm.
- Custom dimensions 1975 mm to 2700 mm.



Horizontal cross-section of LATENTE STANDARD pocket doorframe with wooden door leaf 40 mm thick.

Vertical cross-section of LATENTE STANDARD frame with wooden door leaf 40 mm thick.



Accessories for pocket doorframes

LATENTE STANDARD

All accessories and joining material included.

INCLUDED IN THE PACKAGE

Set of travelling mechanisms

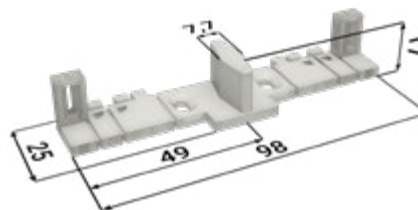
1 rail add-on



2 door racks



1 guide pin



2 stops



2 carriages



ACCESSORIES AT EXTRA CHARGE

Soft closing mechanism for wooden (≤ 60 kg) + activator

1 soft closing mechanism

1 activators



Soft closing mechanism for glass door (60–85 kg) + activator

1 soft closing mechanism

1 activators



Soft closing mechanism for glass door (85–120 kg) + activator

1 soft closing mechanism

1 activators



- To damp both sides, two single-sided damping systems must be used.

DATA NECESSARY FOR ORDERING INSTALLATION PACKAGE FOR LATENTE STANDARD POCKET DOORFRAME

- Net passage dimensions of pocket doorframe
- Weight of door leaf

Pocket doorframe LATENTE KOMFORT

LATENTE KOMFORT pocket doorframe



This model is a set of two welded pockets connected with a guide moulding. Each pocket is intended for one single-leaf door that slides out against itself.

- The pocket doorframes are designed for the LATENTE range of counter-doorframes for revolving doors
- The movement of the door leaves is synchronized — synchronous slide included for the LATENTE KOMFORT model
- The LATENTE KOMFORT pocket doorframe allows installation of a mounting panel frame flush with the neighbouring partition
- For mounting panel door-frames 15 mm thick. Doorframe is flush with the outline of the wall
- Optional custom dimensions to 2700 mm tall
- Used for drywall or masonry
- For masonry partitions, the hole must be provided with a lintel — the pocket doorframe cannot bear a load
- For wooden, all-glass, MASTER and IDEA doors
- Compatible with all makes of door
- Maximum weight per door leaf is 120 kg
- Very quiet travelling mechanism in a special aluminium slat
- Removable upper rail
- Adjustable front and rear stop
- Option to purchase a damping stop for gradual door closing
- A switch can be placed in the frame pocket
- Entire frame made of high-quality galvanized sheet metal
- 10-year warranty



Dimensions of pocket doorframe

LATENTE KOMFORT

All dimensions are in millimetres.

Maximum dimensions of door leaf (F) for K 100: 68.

MOUNTING PANELS

50 mm + 12 mm half track + 3 mm wide shadow groove.

LATENTE KOMFORT 1970 mm

Height of net passage after installation of mounting panels (J): 1970.

Total height of the pocket doorframe (H): 2053.

Standard height of wooden door leaf (L): 1985.

Net passage after mounting panels min. (D × J)	Overall dimensions of pocket doorframe (E × H)	Width of sheet metal pocket (A)	Width of passage after installation of pocket doorframe (B)	Net passage after installing mounting panels min. (C × L)	Dimensions of rough construction opening in drywall	Recommended dimensions for rough structural hole in masonry systems
1250 × 1970	2696 × 2053	690	1316	(650 × 2) × 1985	2696 × 2053	2736 × 2073
1450 × 1970	3096 × 2053	790	1516	(750 × 2) × 1985	3096 × 2053	3136 × 2073
1650 × 1970	3496 × 2053	890	1716	(850 × 2) × 1985	3496 × 2053	3536 × 2073
1850 × 1970	3896 × 2053	990	1916	(950 × 2) × 1985	3896 × 2053	3936 × 2073
2050 × 1970	4296 × 2053	1090	2116	(1050 × 2) × 1985	4296 × 2053	4336 × 2073
2250 × 1970	4696 × 2053	1190	2316	(1150 × 2) × 1985	4696 × 2053	4736 × 2073
2450 × 1970	5096 × 2053	1290	2516	(1250 × 2) × 1985	5096 × 2053	5136 × 2073

LATENTE KOMFORT 2100 mm

Height of net passage after installation of mounting panels (J): 2100.

Total height of the pocket doorframe (H): 2183.

Standard height of wooden door leaf (L): 2115.

Net passage after mounting panels min. (D × J)	Overall dimensions of pocket doorframe (E × H)	Width of sheet metal pocket (A)	Width of passage after installation of pocket doorframe (B)	Net passage after installing mounting panels min. (C × L)	Dimensions of rough construction opening in drywall	Recommended dimensions for rough structural hole in masonry systems
1250 × 2100	2696 × 2183	690	1316	(650 × 2) × 2115	2696 × 2183	2736 × 2073
1450 × 2100	3096 × 2183	790	1516	(750 × 2) × 2115	3096 × 2183	3136 × 2073
1650 × 2100	3496 × 2183	890	1716	(850 × 2) × 2115	3496 × 2183	3536 × 2073
1850 × 2100	3896 × 2183	990	1916	(950 × 2) × 2115	3896 × 2183	3936 × 2073
2050 × 2100	4296 × 2183	1090	2116	(1050 × 2) × 2115	4296 × 2183	4336 × 2073
2250 × 2100	4696 × 2183	1190	2316	(1150 × 2) × 2115	4696 × 2183	4736 × 2073
2450 × 2100	5096 × 2183	1290	2516	(1250 × 2) × 2115	5096 × 2183	5136 × 2073

A – width of sheet metal pocket

B – width of passage after installation of pocket doorframe

C – standard width of door leaf

D – width of net passage after installation of mounting panels

E – total width of pocket doorframe

F – maximum thickness of door leaf

G – internal dimensions of frame

H – total height of pocket doorframe

I – floor–rail height (verification of positioning on the finished floor)

J – height of net passage after installation of mounting panels

K – external dimensions of pocket doorframe

L – standard height of door leaf

P – Minimum thickness of finished partition

MOUNTING PANELS

65 mm + 0 mm wide half-groove + 1 mm wide shadow groove

LATENTE KOMFORT 1970 mm

Height of net passage after installation of mounting panels (J): 1970.

Total height of the pocket doorframe (H): 2054.

Standard height of wooden door leaf (L): 1985.

Net passage after mounting panels min. (D × J)	Overall dimensions of pocket doorframe (E × H)	Width of sheet metal pocket (A)	Width of passage after installation of pocket doorframe (B)	Net passage after installing mounting panels min. (C × L)	Dimensions of rough construction opening in drywall	Recommended dimensions for rough structural hole in masonry systems
1250 × 1970	2692 × 2054	690	1312	(650 × 2) × 1985	2692 × 2054	2732 × 2074
1450 × 1970	3092 × 2054	790	1512	(750 × 2) × 1985	3092 × 2054	3132 × 2074
1650 × 1970	3492 × 2054	890	1712	(850 × 2) × 1985	3492 × 2054	3532 × 2074
1850 × 1970	3892 × 2054	990	1912	(950 × 2) × 1985	3892 × 2054	3932 × 2074
2050 × 1970	4292 × 2054	1090	2112	(1050 × 2) × 1985	4292 × 2054	4332 × 2074
2250 × 1970	4692 × 2054	1190	2312	(1150 × 2) × 1985	4692 × 2054	4732 × 2074
2450 × 1970	5092 × 2054	1290	2512	(1250 × 2) × 1985	5092 × 2054	5132 × 2074

LATENTE KOMFORT 2100 mm

Height of net passage after installation of mounting panels (J): 2100.

Total height of the pocket doorframe (H): 2184.

Standard height of wooden door leaf (L): 2115.

Net passage after mounting panels min. (D × J)	Overall dimensions of pocket doorframe (E × H)	Width of sheet metal pocket (A)	Width of passage after installation of pocket doorframe (B)	Net passage after installing mounting panels min. (C × L)	Dimensions of rough construction opening in drywall	Recommended dimensions for rough structural hole in masonry systems
1250 × 2100	2692 × 2184	690	1312	(650 × 2) × 2115	2692 × 2184	2732 × 2204
1450 × 2100	3092 × 2184	790	1512	(750 × 2) × 2115	3092 × 2184	3132 × 2204
1650 × 2100	3492 × 2184	890	1712	(850 × 2) × 2115	3492 × 2184	3532 × 2204
1850 × 2100	3892 × 2184	990	1912	(950 × 2) × 2115	3892 × 2184	3932 × 2204
2050 × 2100	4292 × 2184	1090	2112	(1050 × 2) × 2115	4292 × 2184	4332 × 2204
2250 × 2100	4692 × 2184	1190	2312	(1150 × 2) × 2115	4692 × 2184	4732 × 2204
2450 × 2100	5092 × 2184	1290	2512	(1250 × 2) × 2115	5092 × 2184	5132 × 2204

Pocket doorframe

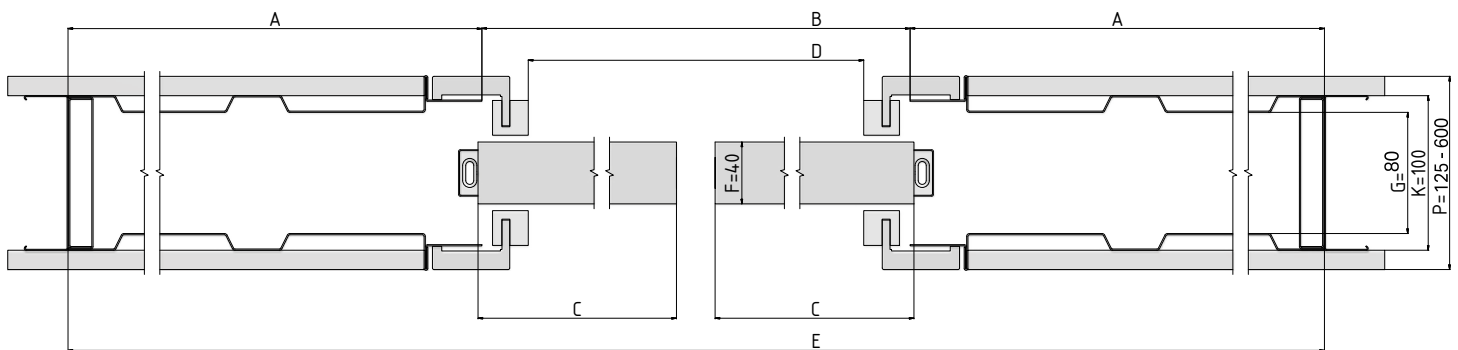
LATENTE KOMFORT

DATA NECESSARY FOR ORDERING LATENTE KOMFORT POCKET DOORFRAME

- Clear passage dimensions: D × J
- Partition type: Drywall × masonry
- Thickness of finished partition
- Mounting panel type: 50 + 12 + 3 mm or 65 + 0 + 1 mm (mounting panel width + half-track width + shadow groove width)

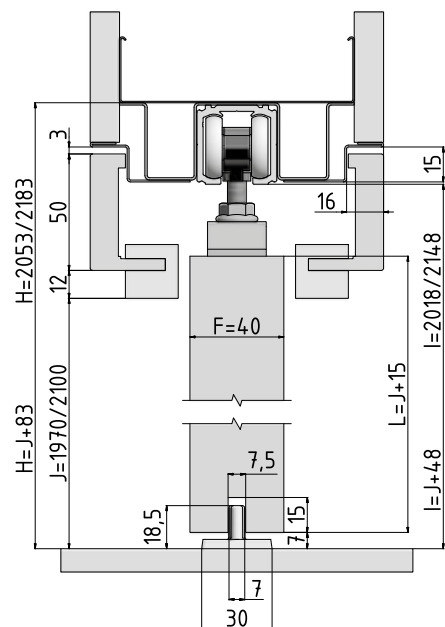


- Outer thickness (K) of the LATENTE KOMFORT pocket door-frame is 100 mm = finished partition (P) is 125 mm.
- The hole must be provided with a lintel — the pocket door-frame cannot bear a load.
- Standard net passage height is 1970 mm, 1985 mm, 2100 mm and 2115 mm.



Horizontal cross-section of LATENTE KOMFORT pocket doorframe with a wooden door leaf 40 mm thick.

Vertical cross-section of LATENTE KOMFORT frame with wooden door leaf 40 mm thick.



Accessories for pocket doorframes

LATENTE KOMFORT

All accessories and joining material included.

INCLUDED IN THE PACKAGE

Set of travelling mechanisms

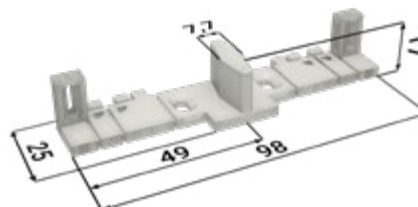
1 rail add-on



2 door racks



1 guide pin



2 stops

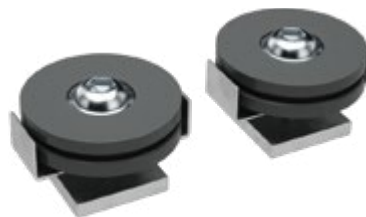


2 carriages



ACCESSORIES FREE OF CHARGE

Synchronizing mechanism package



ACCESSORIES AT EXTRA CHARGE

Soft closing mechanism for wooden (≤ 60 kg) + activator

2 soft closing mechanisms

2 activators



Soft closing mechanism for glass door (60–85 kg) + activator

2 soft closing mechanisms

2 activators



Soft closing mechanism for glass door (85–120 kg) + activator

2 soft closing mechanisms

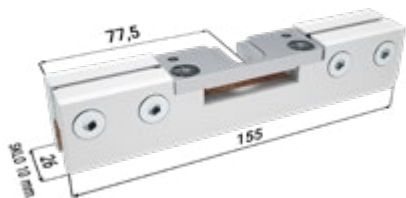
2 activators



- To damp both sides, two single-sided damping systems must be used.

Fixtures kit for the Vetro 22 glass door leaf with sliding guide

4 Vetros



DATA NECESSARY FOR ORDERING SOFT CLOSING MECHANISM FOR LATENTE KOMFORT POCKET DOORFRAME

- Net passage dimensions of pocket doorframe
- Weight of door leaf

METAL FITTINGS OFFERED FOR SLIDING DOORS

Offered in these versions:

OSC – matte chrome

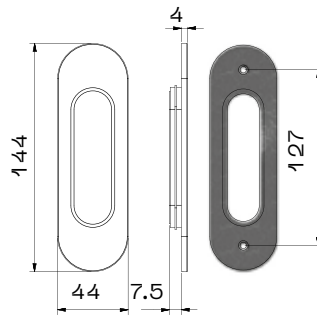
OC – gloss chrome

LV – gloss brass



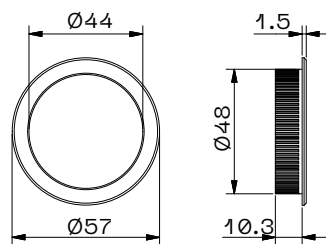
521 – OVAL DOOR PULL

Oval door pull without holes, with concealed screws.



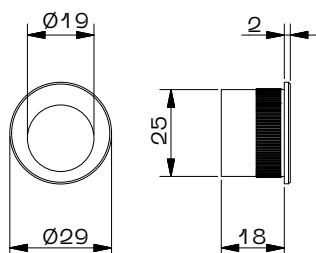
524 – WIDE ROUND DOOR PULL

Round door pull without holes with a wide centre.



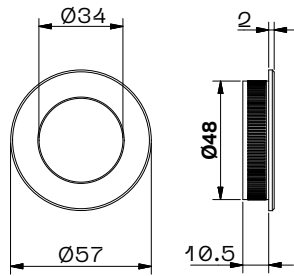
525 – FRONT DOOR PULL

Front door pull.



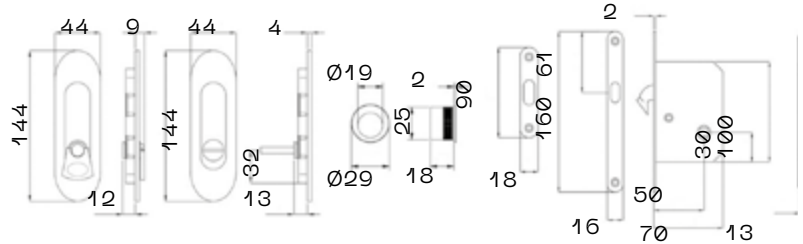
529 – NARROW ROUND DOOR PULL

Round door pull without holes and a narrow centre.



CD Ø48 – OVAL TOILET LOCK

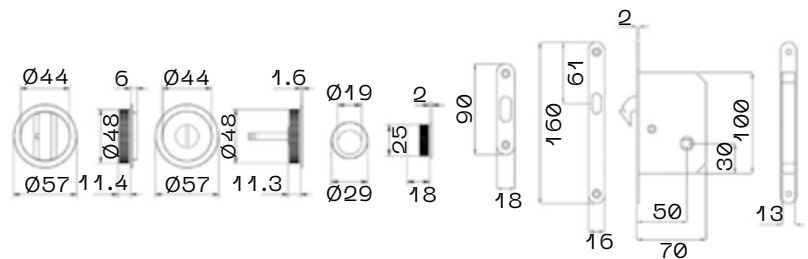
Oval bathroom door lock kit – lockable from one side – lavatories, bathrooms.



CD Ø50 – ROUND TOILET DOOR LOCK

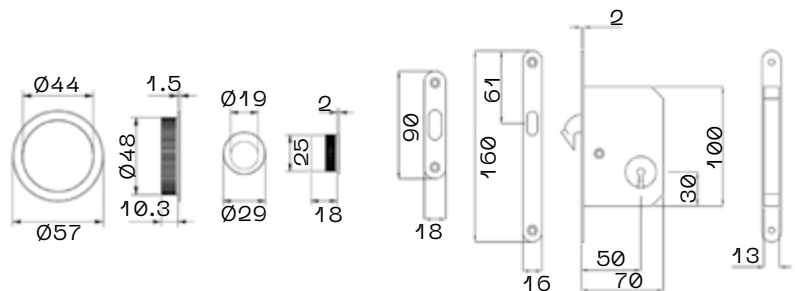
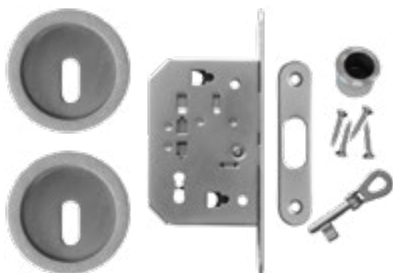
Round bathroom door lock kit – lockable from one side.

Intended for rooms that require locking from one side – toilet, bathroom.



CD Ø63 – ROUND DOOR PULL + FOLDING KEY

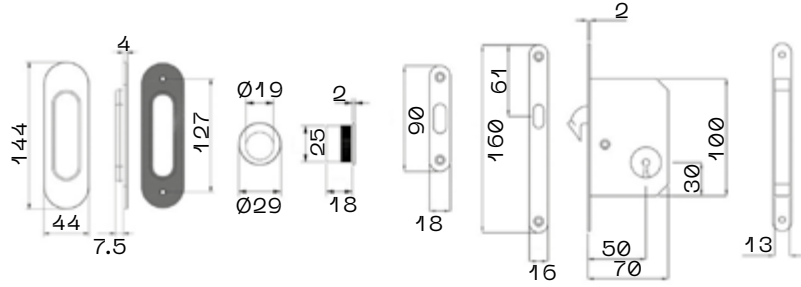
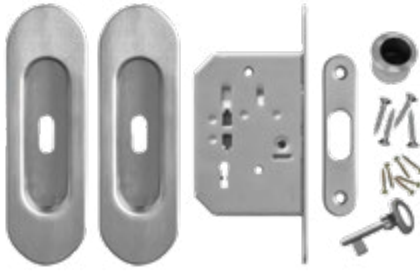
Kit with folding key – lockable from both sides. Intended for rooms that require locking from both sides – bedrooms.



METAL FITTINGS OFFERED FOR SLIDING DOORS

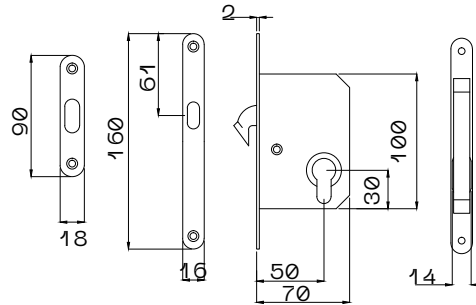
CD 067 – OVAL DOOR PULL + FOLDING KEY

Kit with oval door pull and folding key – lockable from both sides. Intended for rooms that require locking from both sides – bedrooms.



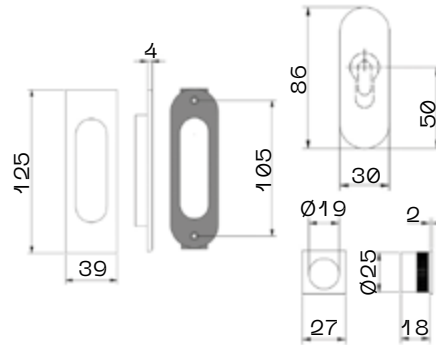
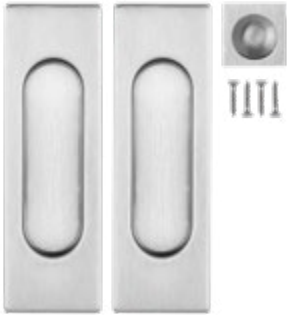
CD 1150 – OVAL FAB LOCK

Kit with oval door pull and FAB lock – lockable from both sides. Supplied without the lock cylinder and key.



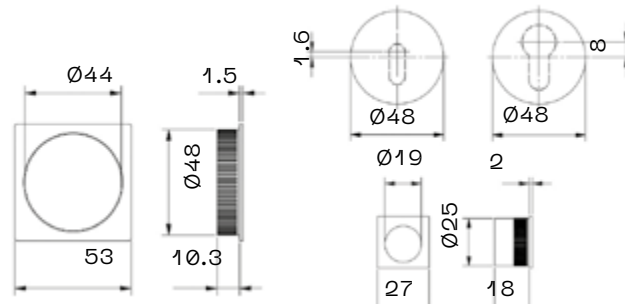
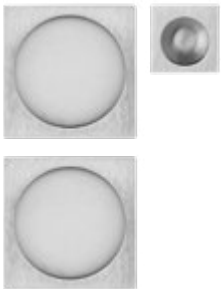
CD 938 – RECTANGULAR DOOR PULL

Rectangular door pull without a hole.



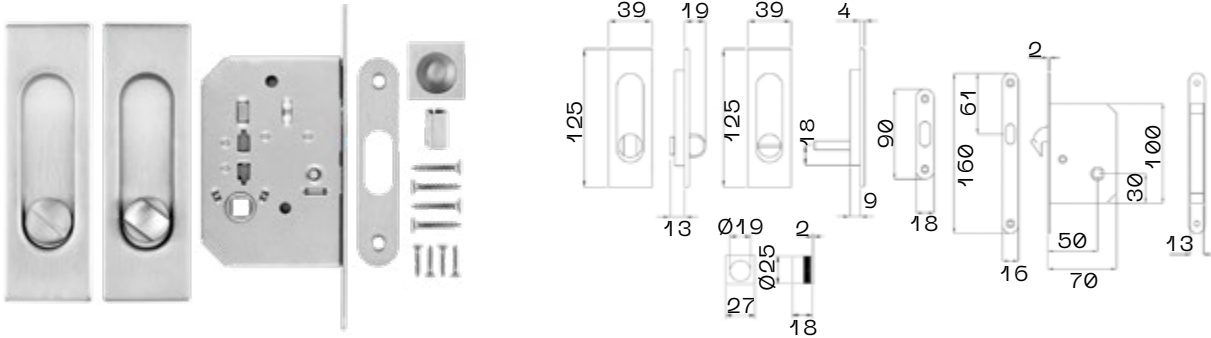
CD Q22 – RECTANGULAR DOOR PULL

Rectangular door pull without a hole.



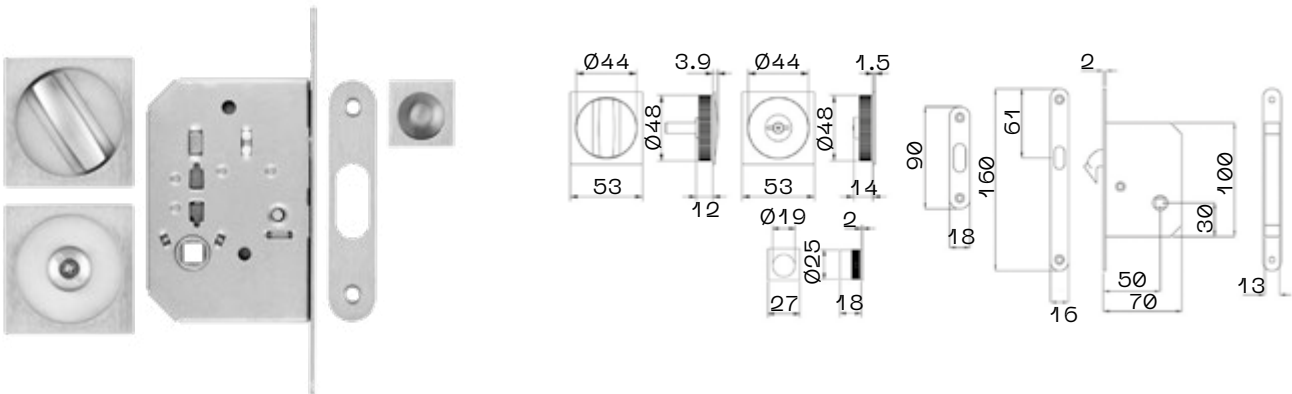
CD 962 – RECTANGULAR DOOR PULL WITH TOILET LOCK

Rectangular toilet door lock kit – lockable from one side. Intended for rooms that require locking from one side – toilet, bathroom.



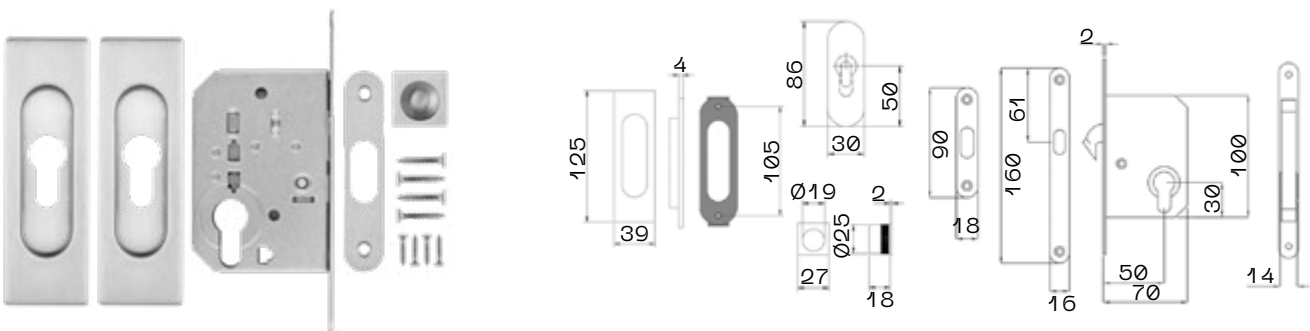
CD 829 – RECTANGULAR DOOR PULL WITH TOILET LOCK

Rectangular toilet door lock kit – lockable from one side. Intended for rooms that require locking from one side – toilet, bathroom.



CD YR6 – RECTANGULAR DOOR PULL WITH LOCK

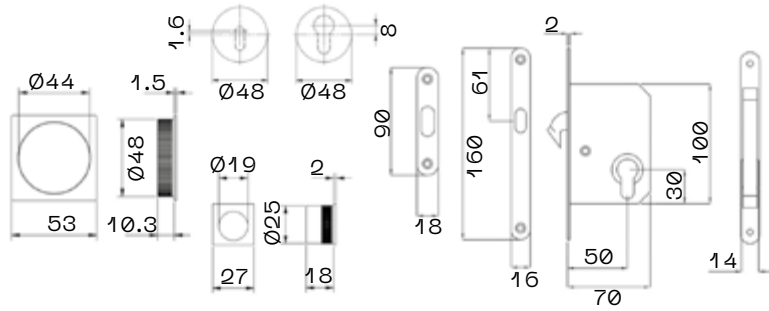
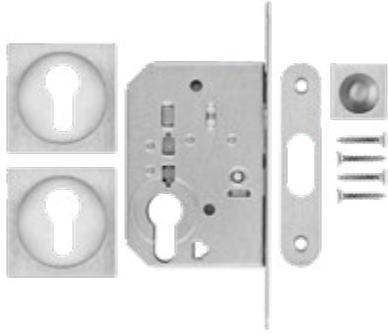
Kit with a rectangular door pull and a FAB lock – lockable from both sides. Supplied without the lock cylinder and key.



METAL FITTINGS OFFERED FOR SLIDING DOORS

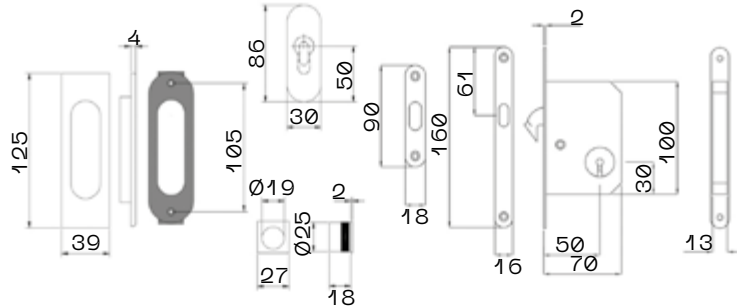
CD Q6Y – RECTANGULAR DOOR PULL WITH LOCK

Kit with a rectangular door pull and a FAB lock – lockable from both sides. Supplied without the lock cylinder and key.



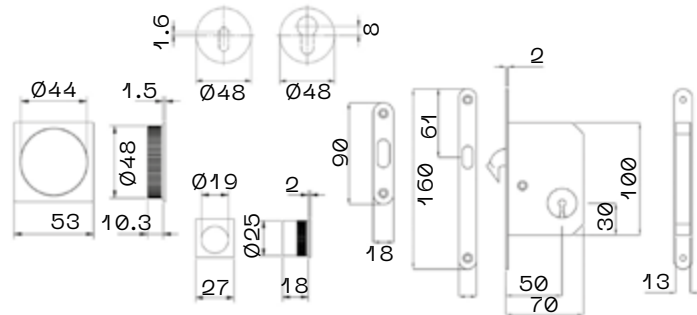
CD 956 – RECTANGULAR DOOR PULL + FOLDING KEY

Rectangular door pull kit intended for rooms that require locking from both sides – bedrooms.



CD Q63 – RECTANGULAR DOOR PULL + FOLDING KEY

Rectangular door pull kit intended for rooms that require locking from both sides – bedrooms.



WALL AND CEILING TRACKS

These mechanisms are an ideal choice for those who want a fresh, clean design solution and optimal use of interior space.

Sliding mechanisms offer a solution for situations where it is no longer possible to interfere with the partition and construct a pocket doorframe for a sliding door. Mounting the travelling rails requires no structural modifications.

All of our sliding mechanisms are manufactured from quality materials, mainly from aluminium, or alternatively from stainless steel, and are ideal for both glass and wooden doors.

We offer sliding systems in the ranges TRIX BASIC, TRIX TRENDY AND PREMIUM.

They are mounted onto the wall or ceiling above the doorframe, or alternatively on a glass wall. The choice of the track type largely depends on the weight of the door leaf.

The PREMIUM track is mounted onto the load-bearing ceiling and is covered with drywall soffit – this is called a concealed sliding mechanism. The PREMIUM system creates an elegant partition between two separate spaces.

All of our wall and ceiling mounted travelling mechanisms are very silent and, depending on the type, also have the option for soft closing mechanisms.



All sliding systems are painted in colours from the RAL, NCS or CREATIVE METALLIC swatch book.

	TRIX BASIC	TRIX TRENDY	PREMIUM
max. weight per leaf	100 kg	100 kg	160 kg
track material	aluminium	aluminium	aluminium
carriage hanger material	plastic	plastic	plastic/Al alloy
surface treatment	brushed aluminium	elox	RAL K7, NCS, CREATIVE METALLIC
wooden doors	✓	✓	✓
glass doors	✓	✓	✓
for masonry	✓	✓	
above mounting panel	✓	✓	
to ceiling	✓	✓	✓
for glass wall			
single-leaf	✓	✓	✓
double-leaf	✓	✓	✓
synchronous	✓	✓	
damping stop	✓	✓**	✓
fixed all-glass		✓	✓
fixed leaf thickness 40 mm	✓		✓
MASTER doors	✓	✓	✓

* Installation package must be used for wooden doors.

** From passages of 700 mm/1450 mm.

SLIDING SYSTEMS TRIX / PREMIUM

On wall and ceiling

TRIX BASIC – wood



TRIX BASIC – glass



TRIX TRENDY – wood



TRIX TRENDY – glass



PREMIUM



PREMIUM – glass



Sliding systems

TRIX

BASIC / TRENDY

TRIX BASIC sliding system — single-leaf



Sliding system

TRIX BASIC

SINGLE-LEAF TRACK

- clear passage 600–1400 mm
- aluminium material
- surface treatment: brushed aluminium
- option for textured and smooth surface treatments from the RAL K7, NCS or CREATIVE METALLIC swatch books
- maximum door weight 100 kg

DOUBLE-LEAF SLIDING

- clear passage 1250–2600 mm
- aluminium material
- surface treatment: brushed aluminium
- option for textured and smooth surface treatments from the RAL K7, NCS or CREATIVE METALLIC swatch books
- maximum door weight 100 + 100 kg



TRIX BASIC sliding system
Single-leaf track

TRIX BASIC sliding system
Double-leaf track

Sliding system

TRIX TRENDY

SINGLE-LEAF TRACK

- front 65/85 mm
- clear passage 600–900 mm
- aluminium material
- surface treatment: elox
- option for textured and smooth surface treatments from the RAL K7, NCS or CREATIVE METALLIC swatch books
- maximum door weight 100 kg

1 set of carriages, 1 guide pin, 1 set of Vetro II (in the case of all-glass doors), 1 soft closing mechanism*, aluminium profiles to order.

* Net passage from 700 mm.

DOUBLE-LEAF SLIDING

- front 65/85 mm
- clear passage 1250–1850 mm
- aluminium material
- surface treatment: elox
- option for textured and smooth surface treatments from the RAL K7, NCS or CREATIVE METALLIC swatch books
- maximum door weight 100 + 100 kg

2 sets of carriages, 2 sets of Vetro II (for all-glass doors), 2 soft closing mechanisms* included.

* Net passage from 1450 mm.



TRIX TRENDY sliding system
Single-leaf track



TRIX TRENDY sliding system
Double-leaf track

Sliding system

TRIX TRENDY

FIXED WALL + SINGLE-LEAF TRACK

- front 65/85 mm
- aluminium material
- surface treatment: elox
- option for textured and smooth surface treatments
from the RAL K7, NCS, CREATIVE METALLIC swatch books
- maximum door weight 100 kg

1 set of carriages, 1 guide pin, 1 set of Vetro II (in the case of all-glass doors), 1 soft closing mechanism.



Sliding systems PREMIUM

PREMIUM sliding systems — Fixed wall + single-leaf track
IDEA door clear glass



Sliding system PREMIUM

FIXED WALL + SINGLE-LEAF TRACK

- aluminium material
- maximum door weight 100 kg

The price includes a set of 2 carriages with a soft closing mechanism, a guide pin, 2 sets of Vetro II (for all-glass doors), recessed door pulls (for wooden doors).

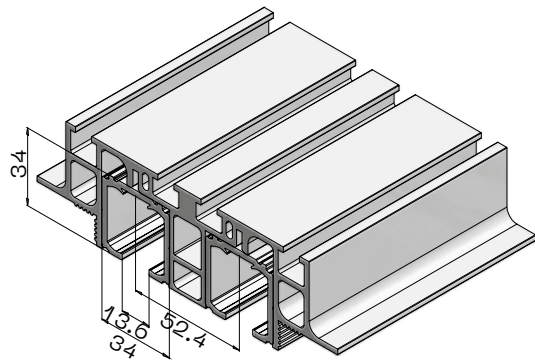


Sliding system PREMIUM

DOUBLE-LEAF SLIDING

- aluminium material
- maximum door weight 100 kg

The price includes a set of 2 carriages with a soft closing mechanism, a guide pin, 2 sets of Vetro II + cover (for all-glass doors), recessed door pulls (for wooden doors).



PREMIUM sliding system – Double-leaf track
IDEA door – Planibel grey glass



PREMIUM sliding system — Fixed wall + single-leaf track
IDEA door with Grafoglass

POCKET DOORFRAMES SLIDING SYSTEMS

JAP

HEADQUARTERS AND SHOWROOM

JAP FUTURE s.r.o.
Nivky 67
750 02 Přerov III – Lověšice

+420581587811
jap@japcz.cz
www.japcz.cz

PRAGUE SHOWROOM

Českomoravská 183/27
(Sykora Home)
190 00 Prague 9 – Vysočany
+420 739 278 160
praha@japcz.cz